



Journal of Communications

JCM www.jocm.us
ISSN: 1796-2021
Journal of Communications

Journal Menu

Aims and Scope (<http://www.jocm.us/list-11-1.html>)

Editorial Board (<http://www.jocm.us/list-18-1.html>)

Indexing Service (<http://www.jocm.us/list-15-1.html>)

Article Processing Charge (<http://www.jocm.us/list-13-1.html>)

Open Access Policy (<http://www.jocm.us/list-99-1.html>)

Publication Ethics (<http://www.jocm.us/list-149-1.html>)

Digital Preservation Policy (<http://www.jocm.us/list-253-1.html>)

Editorial Process (<http://www.jocm.us/list-241-1.html>)

Subscription (<http://www.jocm.us/list-21-1.html>)

Contact Us (<http://www.jocm.us/list-20-1.html>)

General Information

ISSN: 1796-2021 (Online); 2374-4367 (Print)

Abbreviated Title: J. Commun.

Frequency: Monthly

DOI: 10.12720/jcm

Abstracting/Indexing: Scopus (<https://www.scopus.com/sourceid/21100230800>); DBLP (<https://dblp.uni-trier.de/db/journals/jcm/>); CrossRef (<https://www.crossref.org/>), EBSCO (<https://www.ebsco.com/>), Google Scholar (https://scholar.google.com/scholar?hl=en&as_sdt=1%2C5&as_ylo=2021&as_vis=1&q=site%3Ahttp%3A%2F%2Fwww.jocm.us&btnG=); CNKI, (<https://scholar.cnki.net/journal/index/SJDJ179620210921>) *etc.*

E-mail questions or comments to jocm@vip.163.com (<mailto:jocm@vip.163.com>); jcm@etpub.com (<mailto:jcm@etpub.com>)

Acceptance Rate: 27%

APC: 400 USD

Average Days to Accept: 73 days

Journal Metrics (https://www.scopus.com/sourceid/21100230800?dgcid=sc_widget_citescore)

1.9

(https://www.scopus.com/sourceid/21100230800?dgcid=sc_widget_citescore)

2021
CiteScore
www.scopus.com/sourceid/21100230800?dgcid=sc_widget_citescore

36th percentile

(https://www.scopus.com/sourceid/21100230800?dgcid=sc_widget_citescore)

(https://www.scopus.com/sourceid/21100230800?dgcid=sc_widget_citescore)

Powered by **Scopus**

(https://www.scopus.com/sourceid/21100230800?dgcid=sc_widget_citescore)

(https://www.scopus.com/sourceid/21100230800?dgcid=sc_widget_citescore)



(<https://www.scimagojr.com/journalsearch.php?q=21100230800&tip=sid&exact=no>)

Editor-In-Chief



Prof. Maode Ma

College of Engineering, Qatar University, Doha, Qatar

I'm very happy and honored to take on the position of editor-in-chief of JCM, which is a high-quality journal with potential and I'll try my every effort to bring JCM to a next level...[\[Read More\]](http://www.jocm.us/index.php?m=content&c=index&a=lists&catid=18) (<http://www.jocm.us/index.php?m=content&c=index&a=lists&catid=18>)

What's New

2023-03-10

Volume 18, No. 3 has been published online! (<http://www.jocm.us/list-285-1.html>)

2023-03-09

Volume 18, No. 1-2 has been indexed by Scopus. (<http://www.jocm.us/scopusresults.pdf>)

2023-02-10

Volume 18, No. 2 has been published online! (<http://www.jocm.us/scopusresults-v18,1-2.pdf>)

[Home](http://www.jocm.us) (<http://www.jocm.us>) > [About JCM](http://www.jocm.us/index.php?m=content&c=index&a=lists&catid=19) (<http://www.jocm.us/index.php?m=content&c=index&a=lists&catid=19>) > [Editorial Boards](http://www.jocm.us/list-18-1.html) (<http://www.jocm.us/list-18-1.html>) >

Editorial Board

We are seeking professionals to join our Editorial Board. If you are interested in becoming an Editor, please send your CV and a one-page summary of your specific expertise and interests to the following email address. We will review your information and if appropriate, we will place you on our list of Editorial Board.

Please send your application to: jocm@vip.163.com (<mailto:jocm@vip.163.com>)

Editor-in-Chief



Prof. Maode Ma

College of Engineering, Qatar University, Doha, Qatar

Associate Editor



Prof. Jalel Ben-Othman

Department of Computer Science of University of Paris 13, France

Website (<http://www-12ti.univ-paris13.fr/~jbo/>) | Email ([http://jalel.ben-othman\[at\]univ-paris13.fr](mailto:jalel.ben-othman[at]univ-paris13.fr))

Interest: multi-path, fading, distortion and security since communications are transmitted over radio waves.



Prof. Nobuo Funabiki

Department of Electrical and Communication Engineering, Faculty of Engineering, Okayama University, Okayama, Japan

Website | (http://www.ec.okayama-u.ac.jp/~dist/funabiki/public_html/english/index.html) | Email ([http://funabiki@okayama-u.ac.jp](mailto:funabiki@okayama-u.ac.jp))

Interest: computer networks, optimization algorithms, educational technology, web technology.

Advisory Board

Prof. Nirwan Ansari (IEEE Fellow)

ECE Dept., New Jersey Institute of Technology, Newark, NJ 07102, USA

Website | (<https://web.njit.edu/~ansari>) | Email ([http://Nirwan.Ansari@njit.edu](mailto:Nirwan.Ansari@njit.edu))

Interest: cloud/edge computing, green communications and networking, drone-assisted networking, multi-media communications, and various aspect of broadband networks.

Editorial Board

Prof. Sherali Zeadally (FIET, FBCS)

University of Kentucky Lexington, USA

Website (<http://www.uky.edu/~sze223/>) | Email (<mailto:szeadally@uky.edu>)

Interest: cybersecurity privacy internet of things energy-efficient networking computer networks (including vehicular networks).

Prof. José Manuel Molina López

Computer Science Department, Universidad Carlos III de Madrid, Avenida Gregorio Peces-Barba Martínez, 22, 28270 Colmenarejo Madrid, Spain

Website (<https://www.inf.uc3m.es/en/component/comprofiler/userprofile/molina>) | Email ([http://molina@ia.uc3m.es](mailto:molina@ia.uc3m.es))

Interest: artificial intelligence, data fusion, IoT.

Prof. Michael Sheng

Department of Computing, Macquarie University, Sydney, Australia

Website (<http://web.science.mq.edu.au/~qsheng/>) (<http://michael.sheng@mq.edu.au>) Email ([http://molina@ia.uc3m.es](mailto:molina@ia.uc3m.es))

Interest: internet of things, web of things, sensor Networks, big data analytics.

Prof. Jenq-Shiou Leu

Department of Electronic and Computer Engineering, National Taiwan University of Science and Technology, Taiwan

Website (http://www.et.ntust.edu.tw/et/faculty_en.php?user=jsleu) (<http://michael.sheng@mq.edu.au>) Email ([http://jsleu@mail.ntust.edu.tw](mailto:jsleu@mail.ntust.edu.tw))

Interest: wireless networks, datacentres, edge computing, information security.

Prof. Wen Ji

Institute of Computing Technology, Chinese Academy of Sciences, Beijing, P.R. China

Website (<http://rcpc.ict.ac.cn/WenJi/>) (<http://michael.sheng@mq.edu.au>) Email ([http://jiwen@ict.ac.cn](mailto:jiwen@ict.ac.cn))

Interest: multimedia communication and networking, video coding, channel coding, information theory, optimization, network economics, and ubiquitous computing.

Prof. Mohammed Atiquzzaman

School of Computer Science, University of Oklahoma, Norman, OK 73019, USA

Website (<http://www.ou.edu/coe/cs/people/atiq/>) Email (<mailto:atiq@ou.edu>)

Interest: satellite networking, vehicular communications, mobility management.

Prof. Abdelhalim Zekry

Electronics and Communication Engineering Department, Faculty of Engineering, Ain Shams University, Cairo, Egypt.

Website (https://www.researchgate.net/profile/Abdelhalim_Zekry) Email (<mailto:aaazekry@hotmail.com>)

Interest: microelectronics, electronic circuits, electronics for communications, solar cells and photovoltaics.

Prof. Naoshi Sakamoto

Tokyo Denki University, Japan

Website (https://www.researchgate.net/profile/Naoshi_Sakamoto) (<http://michael.sheng@mq.edu.au>) Email (<mailto:sakamoto@c.dendai.ac.jp>)

Interest: campus area network, theoretical computer science.

Prof. Jeong Gon Kim

Dept. of Electronic Engineering, Korea Polytechnic University, Korea

Website (<http://wcl.kpu-eh.ac.kr/>) (<http://michael.sheng@mq.edu.au>) Email (<mailto:jgkim@kpu.ac.kr>)

Interest: 5G communication, UDN (ultra eense network), resource allocation, VLC (visible light communication), WPAN, AI based mobile communication.

Prof. Karl Andersson

Department of Computer Science, Electrical and Space Engineering, Luleå University of Technology, SE-931 87 Skellefteå, Sweden

Website (<https://www.ltu.se/staff/k/karand?l=en>) Email (<mailto:karl.andersson@ltu.se>)

Interest: wireless networks, datacentres, edge computing, information security.

Assoc Prof. Hongyuan Gao

College of Information and Communication Engineering, Harbin Engineering University, Harbin, China

Website (<http://homepage.hrbeu.edu.cn/web/gaohongyuan/>) Email (<http://gaohongyuan@hrbeu.edu.cn>)

Interest: wireless energy harvesting communications, intelligent computing, artificial intelligence, radio signal recognition and classification, array signal processing, cognitive radio, HetNets in 5G, communication theory, image processing, and massive MIMO.

Assoc Prof. Mea Wang

Department of Computer Science, Faculty of Science, University of Calgary, Canada

Website (<http://networks.cpsc.ucalgary.ca/mea/>) Email (<http://meawang@ucalgary.ca>)

Interest: multimedia streaming, video coding, cloud computing, online social network, network security, and software defined networking (SDN).

Assoc Prof. Ivanna Dronyuk

Automated Control Systems Department, Lviv Polytechnic National University, Lviv, Ukraine

Website

(http://wiki.lp.edu.ua/wiki/%D0%94%D1%80%D0%BE%D0%BD%D1%8E%D0%BA_%D0%86%D0%B2%D0%B0%D0%BD%D0%BD%D0%B0_%D0%9C%D0%B

(<http://ivanna.m.droniuk@lpnu.ua>)Email (mailto:ivanna.m.droniuk@lpnu.ua)

Interest: mathematical modeling, data protection, computer network.

Assoc Prof. Abdul Razaque

New York Institute of Technology, New York, USA

Email (<http://arazaque@nyit.edu>)

Interest: cyber security, big Data, secure cloud computing, wireless sensor network, internet-of-things.

Assoc Prof. Chaodit Aswakul

Wireless Network & Future Internet Research Unit, Department of Electrical Engineering, Faculty of Engineering Chulalongkorn University Bangkok, Thailand

Website | (<http://pioneer.netserv.chula.ac.th/~achaodit>)Email (<http://chaodit.a@chula.ac.th>)

Interest: software defined networking, cloud computing, traffic engineering

Assoc Prof. Wan-Jung Chang

Department of Electronic Engineering, Southern Taiwan University of Science and Technology, Taiwan

Website | (<http://faculty.stust.edu.tw/~allenchang/>) Email (mailto:allenchang@stust.edu.tw)

Interest: cloud/IoT systems and Applications, protocols for heterogeneous networks, wireless sensor networks/ high-speed networks design and analysis, wearable devices and network systems design, artificial intelligent IoT(AIoT) systems and applications

Assoc Prof. Wawan Lulus Setiawan

Post Graduate Program of Management, Indonesia Institute of Co-operative Management (IKOPIN), Bandung, Indonesia

Website (<http://www.ikopin.ac.id>)| Email (mailto:wawanlulus@ikopin.ac.id)

Interest: business communication, qualitative and quantitative eesearch methods

Assoc Prof. Renuka Mohanraj

Department of Computer Science, Maharishi University of Management, Fairfield, Iowa, USA

Website (<http://www.ikopin.ac.id>)| (<https://compro.mum.edu/faculty/>)Email (mailto:rmohanraj@mum.edu)

Interest: mobile ad hoc networks with the focus on the topics secure QoS routing, congestion control, and data Security

Assoc Prof. Samy Meftali

University of Lille, France

Website

(https://www.apollo.io/people/Samy/Meftali/55dcf43cf3e5bb16d9003cea_

(<https://www.apollo.io/people/Samy/Meftali/55dcf43cf3e5bb16d9003cea>)| (<https://compro.mum.edu/faculty/>)Email (mailto:samy.meftali@univ-lille.fr)

Interest: embedded systems design, hardware architecture, IoT

Assoc Prof. Attaphongse Taparugssanagorn

ICT Department, School of Engineering andTechnology, Asian Institute of Technology, Thailand

Website (<https://set.ait.ac.th/faculty/attaphongse-taparugssanagorn/>)| (<https://compro.mum.edu/faculty/>) Email (mailto:attaphongset@ait.asia)

Interest: Statistical signal processing and machine/deep learning for solving various of problems, applications, e.g., advanced wireless communications, internet of things, medical ICT, smart factory, precision agriculture.

Assoc Prof. Megat F. Zuhairi

Universiti Kuala Lumpur, Malaysian Institute of Information Technology, Malaysia

Website

(<https://research.unikl.edu.my/view/megatfarez>)_____

(<https://www.apollo.io/people/Samy/Meftali/55dcf43cf3e5bb16d9003cea>)

(<https://compro.mum.edu/faculty/>) Email (mailto:megatfarez@unikl.edu.my)

Interest: wireless sensor networks and ad hoc routing protocol, process mining, hyperledger fabric, deep learning

Assoc Prof. R. Maheswar

School of Electrical & Electronics Engineering (SEEE), VIT Bhopal University, India

Website (https://www.researchgate.net/profile/Maheswar_Rajagopal)| (<https://compro.mum.edu/faculty/>) Email (<mailto:maheshh3@rediffmail.com>)

Interest: wireless sensor network, optical sensors, cross layer design issues, performance evaluation, IoT, queueing theory and modelling and simulation

Dr. Robert Abbas

School of Engineering, Macquarie University, Sydney, Australia

Website (<https://researchers.mq.edu.au/en/persons/robert-abbas>)| (<http://lvanna.m.droniuk@lpnu.ua>)Email (<http://Robert.abbas@mq.edu.au>)

Interest: 6G,5G, IoT ,SDN, NFV, MEC, AI, networks big data analytics and security.

Dr. Ivan Izonin

Department of Publishing Information Technologies, Institute of Computer Science and Information Technologies, Lviv Polytechnic National University, Lviv, Ukraine

Website

(http://wiki.lp.edu.ua/wiki/%D0%86%D0%B7%D0%BE%D0%BD%D1%96%D0%BD_%D0%86%D0%B2%D0%B0%D0%BD_%D0%92%D1%96%D0%BA%D1%82)

(<http://lvanna.m.droniuk@lpnu.ua>)Email (<http://ivanizonin@gmail.com>)

Interest: computational intelligence, non-iterative machine learning algorithms, image and video processing.

Dr. Dinh-Thuan Do

Electrical Engineering Department, University of Colorado Denver,USA

Website | (<https://sites.google.com/site/thuanthu>) Email (<mailto:dodinhthuan@gmail.com>)

Interest: cooperative communication, cognitive radio, MIMO, physical layer security, satellite system, UAV networks.

Dr. Sameh Osama

Electrical Engineering Department, Faculty of Engineering, Egypt.

Website | (https://www.bue.edu.eg/bue_person/draft-created-on-september-9-2018-at-858-am/) Email (<mailto:sameh.osama@bue.edu.eg>)

Interest: underwater communications, power optimization for communication systems, quantum cryptography, quantum key distribution, single photon sources and detectors.

Dr. Xiaokun Yang

Engineering Department, College of Science and Engineering, University of Houston-Clear Lake, Houston, USA

Website | (<https://sceweb.sce.uhcl.edu/xiaokun/Home/>) Email (<mailto:yangxia@uhcl.edu>)

Interest: integrated circuit and system design, FPGA design and acceleration on artificial intelligence and machine learning, system-on-chip (SoC) architecture on IoT.

Dr. Zhiliang Qin

Deputy Chief Engineer, Weihai Beiyang Electric Group Co. Ltd., China

Email (<mailto:qinzhiliang@hotmail.com>)

Interest: machine learning and deep learning for signal processing and computer visions, channel coding, wireless communications, data storage systems.

Journal of Communications

CONTENTS

Volume 15, Number 4, April 2020

| | |
|--|-----|
| Optimal Sensing and Interference Suppression in 5G Cognitive Radio Networks..... | 303 |
| <i>Gashema Gaspard and Dong-Seong Kim</i> | |
| An Approach to Open Access to Multimedia Multicast Services at the Network Edge..... | 309 |
| <i>Ivaylo I. Atanasov, Evelina N. Pencheva, Vladislav G. Vladislavov, and Ventsislav G. Trifonov</i> | |
| Analysis of Microwave Network Design Using Back-to-Back Passive Repeaters with the Influence of Interference Based on ITU-T-G821 Standard..... | 318 |
| <i>Alfin Hikmaturokhman, Ade Wahyudin, Winda E. Rinanda, Subuh Pramono, Arif Hidayat, and Annisa Sarah</i> | |
| Detecting Bengali Spam SMS Using Recurrent Neural Network..... | 325 |
| <i>Md. Mohsin Uddin, Monica Yasmin, M Saddam Hossain Khan, Md Istianatur Rahman, and Tabassum Islam</i> | |
| Prediction Based Efficient Multi-hop Clustering Approach with Adaptive Relay Node Selection for VANET | 332 |
| <i>Sami Abduljabbar Rashid, Lukman Audah, Mustafa Maad Hamdi, and Sameer Alani</i> | |
| Compact Multiband CPW Fed Sub 6 GHz Frequency Reconfigurable Antenna for 5G and Specific UWB Applications..... | 345 |
| <i>Rahul Kumar Verma, Anubhav Kumar, and R. L. Yadava</i> | |
| The Combined Effect of Various Receiver Nonlinearities on Spectrum Sensing in Cognitive Radio Systems | 350 |
| <i>Khaled M. Gharaibeh</i> | |
| The Usage of CDN for Live Video Streaming to Improve QoS. Case Study: 1231 Provider..... | 359 |
| <i>Wella Edli Shabrina, Dodi Wisaksono Sudiharto, Endro Ariyanto, and Muhammad Al Makky</i> | |
| FPGA Implementation of Tracking Phase of the GPS Receiver Using XSG..... | 367 |
| <i>M. El Hawary, G. G. Hamza, Abdelhaliem Zekry, and I. Motawie</i> | |
| An Approach of Concurrent Communications for Distributed Sensing Networks..... | 372 |
| <i>Tuyen P. Truong and Bernard Pottier</i> | |

Analysis of Microwave Network Design Using Back-to-Back Passive Repeaters with the Influence of Interference Based on ITU-T-G821 Standard

Alfin Hikmaturokhman¹, Ade Wahyudin², Winda E. Rinanda¹, Subuh Pramono³, Arif Hidayat⁴, and Annisa Sarah⁵

¹Telecommunication Engineering, Institut Teknologi Telkom Purwokerto, Purwokerto 53147, Indonesia

²Sekolah Tinggi Multi Media Yogyakarta, D.I. Yogyakarta 55284, Indonesia

³Department of Electrical Engineering, Universitas Sebelas Maret, Jawa Tengah, Indonesia

⁴Pusat Teknologi dan Data Penginderaan Jauh LAPAN, Jakarta 13710, Indonesia

⁵Atma Jaya Catholic University of Indonesia, Jakarta 12930, Indonesia

Email: {alfin, 17101232}@ittelkom-pwt.ac.id, {wahyudinade, subuhpramono}@gmail.com, arif_hidayat@lapan.go.id, annisa.sarah@atmajaya.ac.id

Abstract—This paper analyzes the microwave network design which uses the back-to-back passive repeaters with the existence of interference. The microwave network design is simulated on Pathloss 5.0 software. The simulated availability results were compared to the ITU-T G.821 standard, and it shows that the simulated availability result which was produced from the interference affected, back-to-back repeater design, indicates that the availability was not reached the standard, while the other design that uses the back-to-back repeaters which were not affected by interference obtained 99.97403% availability. Although the latter design resulting in a higher availability value compared to the standard, 99.9600%, it is still not fulfilling the path availability standard, which is 99.9800%. The availability result shows that it has fulfilled the ideal condition since the value is above 99.9% and the outage time value is 0.1%. However, the availability result of the budget calculation link of using the back-to-back repeaters network design is 99.98663%, which indicates that the availability value fulfilled the ITU-T G.821 standard.

Index Terms—Microwave, Passive Repeater, Pathloss 5.0, Interference, ITU

I. INTRODUCTION

The microwave communication network is used to transmit information with a large capacity between point-to-point communications, such as the communication between Base Transceiver Station (BTS). Microwave communication works at high frequency between 2 GHz to 24 GHz [1].

Microwave network requires a Line of Sight (LOS) mechanism, which means that the pathway between a transmitter and a receiver should be available without any barrier or obstacles in between. The transmitted information may not be received properly at the receiver antenna if there is an existence of barriers or obstacles

between them [2]. If the barriers are unavoidable then a repeater is needed to increase the quality of the signal. The passive repeater is usually used in such a scenario since it could increase the performance by producing additional gain in the middle of the path and carrying the amplified, repeated signals before reaching the receiver antenna [3].

In the telecommunication networks, an interference will always exist, and such interference could interrupt the transmitted information and give us a poor signal quality [4]-[6]. The impact of interference and obstacles in an area can be studied in a simulation in order to suggest a realistic microwave network design that meets the regulated availability standard. The link budget calculation of the proposed microwave network design is analyzed and simulated by using the Pathloss 5.0 software. The main parameters in which obtained from this study are the availability, fading margin and RSL. These parameters are needed to be ensured that they must meet the objective availability according to ITU-T-G.821 standards

II. RESEARCH METHODS

The analysis in this research is based on a case study that appeared at PT APM, Bogor, Indonesia. The flow diagram of this research is shown in Fig. 1. Firstly, researchers use a realistic data such as latitude, longitude, elevation, antenna and radio data of existing sites, as the input parameters in designing the Bogor site and Cipeteuy site in the Pathloss 5.0 software and calculate the link budget between those sites.

Based on the initial data and simulation, the microwave link between the West Bogor site and the Cipeteuy site was not LOS due to a mountainous barrier. To keep the microwave link connected, a back-to-back passive repeater was placed in the highest place between these two sites.

The impact of passive repeater has been analyzed by comparing the link performance of prior implementation to the subsequent design. Further, to mimic the realistic

Manuscript received August 2, 2019; revised March 6, 2020.
This work was supported by Institut Teknologi Telkom Purwokerto
Corresponding author email: alfin@ittelkom-pwt.ac.id
doi:10.12720/jcm.15.4.318-324

network condition, the additional impact of interference to the microwave link has also been studied. The simulation results are then compared to the provisions of the ITU-T-G.821 standard. The analyzed variables are including the probability of the availability and unavailability of the microwave link. The results of this study would give the suggestion to design a better microwave network with respect to a better link performance.

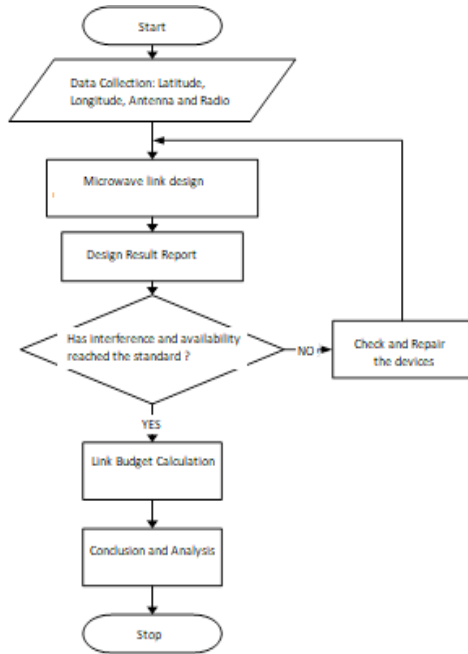


Fig. 1. Research methods flowchart

A. Research Parameters

Antenna gain is used to measure the antenna's ability to send the desired wave towards the destination. The magnitude of the antenna gain can be found with the Equation (1) [7]-[9].

$$G = 20 \log f + 20 \log d + 10 \log \eta + 20.4 \quad (1)$$

where

- G : Antenna Gain (dB)
- η : Efficiency antenna (%)
- d : Diameter antenna (m)
- f : Frequency (GHz)

Free Space Loss (FSL) is the attenuation that exists along with the space between the transmitter antenna and the receiver. There is no barrier in this space because the transmission itself has LOS character. The size of FSL can be calculated by Equation (2) [7]-[9]

$$FSL = 92.45 + 20 \log D + 20 \log f \quad (2)$$

where

- D : Distance (km)
- f : Frequency (GHz)

Emitted Isotropic Radiated Power (EIRP) is the maximum power of microwaves signal which emitted

from the transmitter antenna or to show the effective value of the power emitted by the transmitter antenna, in other words, the power has been strengthened. EIRP is calculated by summing the output power of the transmitting antenna with the antenna gain then subtracted by loss or can be written as the Equation (3) [10], [11].

$$EIRP = P_{TX} + G_{Antenna} - L_{TX} \quad (3)$$

The Isotropic Received Level (IRL) is the isotropic power level value received by the receiver station. To get the value of power at the receiver antenna, the IRL value must be obtained first. The IRL value is obtained from the Equation (4), [12]-[14].

$$IRL = EIRP - FSL \quad (4)$$

where,

- IRL : Isotropic Received Level (dBm)
- EIRP : Effective Isotropic Radiated Power (dBm)
- FSL : Free Space Loss (dB)

Received Signal Level (RSL) is the power level received by decoding processing devices. This RSL value is affected by line losses on the receiving antenna side and the receiver antenna gain. The RSL value can be calculated by Equation (5), [15], [16].

$$RSL = IRL + G_{RX} - L_{RX} \quad (5)$$

where,

- RSL : Received Signal Level (dBm)
- IRL : Isotropic Received Level (dBm)
- G_{RX} : Gain antenna (dBi)
- L_{RX} : Receiver Loss (dB)

Hop Loss is the difference between gain and loss in the microwave link. Gain is reinforcement on the both side, whereas loss is the sum of free space attenuation and such as extra attenuation and atmosphere (water vapor and oxygen). So the amount of Hoploss is expressed in Equation (6), [15], [16].

$$L_h = FSL + L_{TX} + L_{RX} + L_{Atm} - (G_{TX} + G_{RX}) \quad (6)$$

where

- L_h : Hoploss (dB)
- FSL : Free Space Loss (dB)
- L_{TX} : Transmit Loss (dB)
- L_{RX} : Receive Loss (dB)
- L_{atm} : Atmosphere Loss (dB)
- G_{TX} : Receiver Antenna Gain (dBi)
- G_{RX} : Transmitter Antenna Gain (dBi)

Fading Margin (FM) is the difference between the acceptability and the minimum acceptability. Minimum acceptance or called threshold level is the threshold of power received. The relationship between fading margins and receive signal level is shown in Equation (7) [13],

$$FM = 30 \log D + 10 \log(a x b x 2.5 x f) - 10 \log UnAv_{path} - 60 \quad (7)$$

Availability is a measure of system reliability. Ideally all systems must have a value of 100%, but that cannot be

fulfilled, because in a system there must be a system reliability (Unavailability) the value of availability and unavailability can be found with the Equation (8) and Equation (9)[16].

$$Av_{path} = (1 - UnAv_{path}) \times 100\% \quad (8)$$

$$UnAv_{path} = a \times b \times 2.5 \times f \times D^3 \times 10^{-6} \times 10^{-\frac{FM}{10}} \quad (9)$$

where:

FM : Fading Margin (dB)

D : Distance (km)

f : Frequency (GHz)

UnAv_{path} : System Unreliability

Av_{path} : System reliability

a is the earth's roughness factor, and *b* is the climate factor, and different values are taken for different geographical and climate condition, the values for *a* and *b* are:

a : 4 ; for fine areas, seas, lakes and deserts

a : 1 ; for areas of average roughness, terrain

a : ¼ ; for mountains and highlands

b : ½ ; for hot and humid areas

b : ¼ ; for normal areas

b : 1/8 ; for mountainous areas (very dry)

For the back-to-back passive repeater antenna, the gain will be calculated by Equation (10).

$$G = G_{A1} - G_{AC} + G_{A2} \quad (10)$$

where:

G_{A1} : Gain of one repeater antenna (dB)

G_{AC} : Antenna coupling loss (waveguide) (dB)

G_{A2} : Gain from another antenna repeater (dB)

B. ITU-T G.8 Standard

The current ITU-T G.821 Standard has Availability Objective for two parameters to determine the availability of quantity in the form of an Availability Ratio (AR), which shows the ratio of time available to a communication with the total time of operation, and Outage Intensity (OI), which represents the number of outages in a communication system in the total time of operation, as shown in Fig. 2[17]. The OI can also be referred to as the average time for each outage that occurs during the total operating time. The operating time referred to is measured universally taken for 1 year.

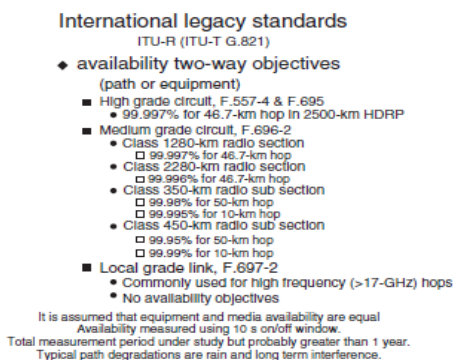


Fig. 2. International availability of objective paths per year based on ITU

Availability Ratio (AR) which used in this study is the Short-Haul Section, since it has a distance of 50 km < L_{link} ≤ 250 km. With the Hop Availability conditions 99,9600% and Path Availability 99,9800% [17].

Interference is an interaction between waves in an area. Interference can be constructive and destructive. It is refers to be constructive if the second phase difference of the waves is the same so that the new wave formed is the sum of the two waves. It is called destructive if the phase is 180 °, so the two waves eliminate each other [2], [14].

Pathloss is a tool which used to measure a loss caused by weather, soil cantilever, etc., so as not to interfere with the transmission between two interconnected antennas. Pathloss value Indicates a weakened signal level (attenuation) caused by the propagation of free space such as reflection, diffraction, and filtering. Path loss is very important in link budget calculation, cell size, or frequency design. Factors that influence the value of my level and path loss are the distance of measurement of Tx and Rx antennas, antenna height (Tx and Rx), and type of measurement area [18].

III. RESULTS AND DISCUSSION

The design of this microwave network is based on the existing West Bogor site with the latitude of 06 34 50.88 S, and longitude 106 45 54.00 E, and site Cipeteuy with the latitude of 06 47 11.69 S, and longitude of 106 37 05.61 E. Based on the results of the design on the microwave link is not LOS due to a barrier in the form of mountains, as shown Fig. 3.

This situation was overcome by the addition of back-to-back passive repeaters antenna. In this planning the author plans a repeater placement at the coordinates of latitude 06 44 58.74 S, longitude 106 36 19.71 E. The network was designed by using Pathloss 5.0, and the simulation results are shown in Fig. 3 and Fig. 4.

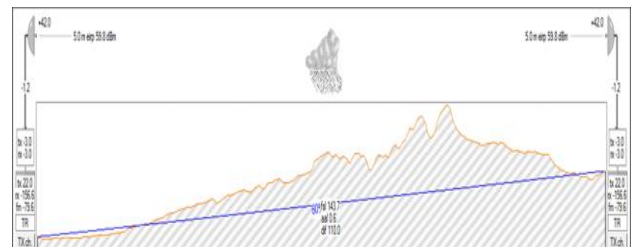


Fig. 3. Design results without repeaters



Fig. 4. Design results with repeaters

According to Fig. 4, the overall results of the network after the additional repeater are not detected, this is

because of the use of microwave and radio type antennas that are not suitable, possible long distances and the presence of interference on the microwave transmission network. For this reason, interference is checked, whether the microwave transmission network that uses back-to-back repeaters has interference, checking is done using Pathloss 5.0 software.

According to Pathloss 5.0 interference summary report, the microwave transmission network is affected by interference, because interference is affected by this design so that interference effects can be seen in Fig. 5 and report interference can be seen in Fig. 6.

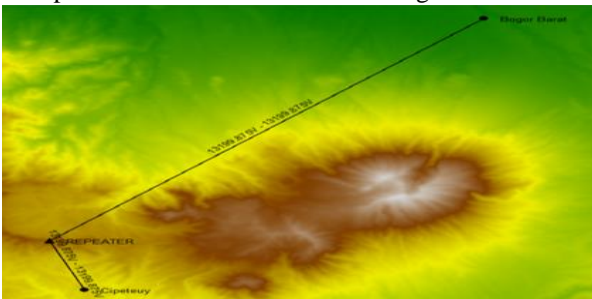


Fig. 5. Bogor Site - Passive repeater - Cipeteuy site has interference

| Interference Summary Report | |
|---|-------------------------------|
| Coordination distance (km) | 200.00 |
| Maximum frequency separation (MHz) | 150.00 |
| Default minimum interference level (dBm) | -115.00 |
| Margin (dB) | 10.00 |
| Threshold degradation objective (db) | 1.00 |
| Total number of cases calculated | 2 |
| Calculation made on | Jumat, Maret 01 2019 05:01:20 |
| Case 1 Bogor Barat from REPEATER - 13199.875V - threshold degradation | |
| 1-1 REPEATER to Cipeteuy - 13199.875V - correlated case | |
| V-I distance 25.69 km | |
| interfering level 74.84 dBm | |
| threshold degradation | |
| Case 2 Cipeteuy from REPEATER - 13199.875V - threshold degradation | |
| 2-1 REPEATER to Bogor Barat - 13199.875V - correlated case | |
| V-I distance 4.32 km | |
| interfering level 100.28 dBm | |
| threshold degradation | |

Fig. 6. Report interference

It can be seen that there is the same frequency usage or the same Channel Id from report case 1, it can be seen that from West Bogor - Repeater uses frequency 13199.875V and case 2 from Repeater - Cipeteuy uses frequency 13199.875V from the same frequency usage that makes it happen influence of interference.

The Back-to-Back Repeater Antenna to Cipeteuy link has made a change in the frequency of interference in the West Bogor site for sub-band frequencies which used 128h frequency (13199.875 MHz - 13199.875 MHz) to 128h (13199.875 MHz - 12974.125 MHz) by setting a frequency high (13199.875 MHz) at West Bogor site and frequency low (12974.125 MHz).

Next, the interference case in this design has been eliminated. The result of Pathloss 5.0 simulation shows the notification of "no interference case", which indicates that the microwave transmission network has not been affected by interference. This phenomenon can be seen in Fig. 7.

All the comparison of Availability or System Reliability value which generated from the microwave transmission network is shown in Table I.

Of all the results and discussions that have been conducted, it can be analyzed that the microwave transmission network in the West Bogor - Cipeteuy site designed using Pathloss 5.0 has a system failure which has caused system reliability to be poor and undetected, all due to an obstacle that makes sending signals from the transmitter antenna cannot be received by the receiver antenna because there is a barrier so that from the design results in Pathloss 5.0 obtained a report that shows that the availability value is not detected can be seen in Table II.

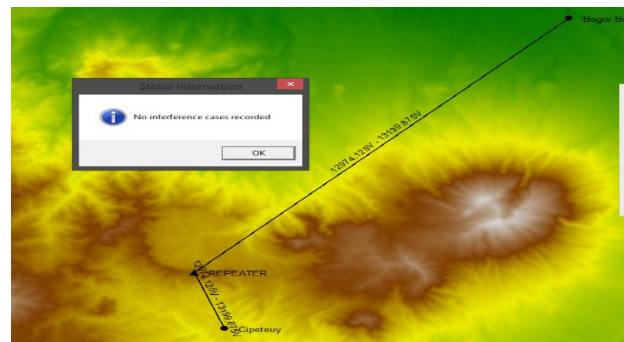


Fig. 7. Site Bogor Barat - Passive Repeater - site cipeteuy without interference

TABLE I: AVAILABILITY WITH THE STANDARD PROVISIONS OF ITU-T-G.821 ON PATHLOSS 5.0

| Parameters | Without Repeater | With Back-to-Back Repeater | ITU-T-G.821 Standard |
|--|------------------|----------------------------|----------------------|
| Annual Rain Availability (%) | - | 99.97403 | 99.9600 |
| Annual Rain + Multipath Availability (%) | - | 99.97403 | 99.9800 |

Hence, because of the poor results of the microwave transmission network at the Bogor Barat - Cipeteuy site, a repeating antenna, Passive Repeater Back to Back Antenna is added, this repeater serves to transmit the information signal, the signal sent by the repeater back to back will gain before being sent back to the receiving antenna, the Cipeteuy site. With the addition of repeaters, the gain was 84.00 dBi and the availability after using repeater back to back was 99.97403 %.

Because the influence of interference has been eliminated, the next step is to analyze the results obtained from the availability to see that the value has reached the ITU-T-G.821 standard or below standard. from table 1 it can be seen that the value of the West Bogor - Cipeteuy site system without repeaters does not meet the standards because system or availability reliability is not detected from the Pathloss 5.0 report, while the link budget calculation results in system reliability of -410428464% this value is very bad for microwave transmission systems, it can be concluded that the reliability of the

system or availability of the West Bogor - Cipeteuy site without repeaters cannot be implemented because the quality of communication services is very poor. As for the results of system alignment from the Bogor site - repeater back to back - Cipeteuy from the results of the Pathloss report 5.0 the annual rain availability generated at 99.97403 % indicates that the value of the system reaches the ITU-TG.821 hop availability standard. 99.9600 %, while for annual rain + multipath availability generated at 99.97403 % this indicates that the overall system reliability value has not reached the ITU-TG.821 path availability standard with the provision of 99.98 %. But in the calculation of the link budget value in the system generated after using a repeater of 99.98663 % this indicates that the value of the calculation results or the link budget can reach the ITU-T-G.821 standard. And for the results of the comparison of the availability of the link budget calculation can be seen in Table II.

TABLE II: AVAILABILITY OF LINK BUDGET CALCULATION RESULT COMPARED TO ITU-T-G.821 STANDARD

| Parameter | Without Repeater | With Back-to-Back Repeater | ITU-T-G.821 Standard |
|------------------|------------------|----------------------------|----------------------|
| Availability (%) | 99.97403 | 99.98663 | 99.9800 |

IV. CONCLUSIONS

There are four final conclusions which can be summarized from this research. First, according to the simulation report on Pathloss 5.0, the repeater produces a gain value of 84.00 dBi and the resulting availability is 99.974035% while the result of the calculation of the link budget availability is 99.986638%.

Second, from the report interference, it can be seen that there is an interference effect that occurs on the microwave transmission network, there are two cases, namely the use of the same frequency or the same Channel Id from the case 1 report, it can be seen that from Bogor Barat - Repeater uses the frequency 13199.875V and case 2 of the Repeater - Cipeteuy uses a frequency of 13199,875V from the use of the same frequency that causes interference.

Next, to overcome cases of interference at the West Bogor site - Passive Repeater - Cipeteuy site changes were made to sub band frequencies that used 128h frequency (13199.875 MHz -13199.875 MHz) to 128h frequency (13199.875 MHz - 12974.125 MHz) by setting a frequency high (13199.875 MHz) at West Bogor site and frequency low (12974.125 MHz). After this is done, the case of interference in this design can be eliminated and when a simulation is carried out on Pathloss, the notification "no interference case" appears.

Lastly, the ITU-TG.821 standard that is used as a reference for availability values, availability of results reaches the standard and there is also a standard below, from the results of the design after the repeater added the annual rain availability value is 99.97403%, from this

value then availability reaches the standard since the value produced is more than the ITU-T G.821 standard, which is 99.9600%, and the value of annual rain plus multipath availability is 99.97403%, this value is called the overall value and this availability value is not reached the ITU-T G.821 standard, because the standard value is 99,9800%, and the value generated from the Pathloss 5.0 report is lower than the standard value because previously in the microwave network design with the addition of repeaters the report results were not detected and the design was made below the standard, that makes the availability results below standard but can still be said to be quite good, because the availability and outage time provisions table the availability value is 99.9%, the outage time value obtained is 0.1% and damage to the transmission network is around 8.8 hours every year, 43 minutes every month and 1.44 minutes per day.

CONFLICT OF INTEREST

The authors declare no conflict of interest.

AUTHOR CONTRIBUTIONS

Alfin, Ade, Winda conducted the research; Subuh, Arif and Annisa analyzed the data; Alfin, Ade, Winda, Arif and Annisa wrote the paper; all authors had approved the final version.

ACKNOWLEDGMENT

Authors would like to acknowledge funding contribution by Institut Teknologi Telkom Purwokerto.

REFERENCES

- [1] A. Hikmaturokhman, E. Wahyudi, and H. Sulaiman, "Analisa pengaruh interferensi terhadap availability pada jaringan transmisi microwave," *Ecotipe*, vol. 1, no. 2, pp. 11–12, 2014.
- [2] A. Hikmaturokhman, A. Wahyudin, A. S. Yuchintya, and T. A. Nugraha, "Comparison analysis of passive repeater links prediction using methods: Barnett vigants & ITU models," in *Proc. 4th Int. Conf. New Media Stud. CONMEDIA 2017*, vol. 2018-Janua, 2017, pp. 142–147.
- [3] Z. H. Pradana and A. Wahyudin, "Analisis optimasi space diversity pada link microwave menggunakan ITU models," *J. Elektro dan Telekomun. Terap.*, vol. 4, no. 2, p. 586, 2018.
- [4] S. Attamimi and R. Rachman, "Perancangan jaringan transmisi gelombang mikro pada link site mranggen 2 dengan site pucang gading," *J. Teknol. Elektro*, vol. 5, no. 2, 2014.
- [5] S. Pramono, "Analisa perencanaan power link budget untuk radio microwave point to point frekuensi 7 GHz (Studi Kasus : Semarang)," *Politek. Negeri Semarang, J. Tek. Elektro Terap.*, vol. 3, no. 1, pp. 27–31, 2014.
- [6] I. E. Dewanti, A. Wahyudin, and A. Hikmaturokhman, "Analisis perbandingan passive repeater back-to-back antenna dan passive repeater plane reflector menggunakan

pathloss 5.0 comparative analysis of passive repeater back-to-back passive repeater antenna and plane reflector using the,” in *Senatek (Seminar Nasional Teknik) 2017*, 2017, pp. 1–8.

- [7] R. G. Winch, *Telecommunication Transmission Systems, 2nd edition*, 2nd ed. New York: McGraw-Hill, 1998.
- [8] A. R. Mishra, *Advanced Cellular Network Planning and Optimisation*, West Sussex: Wiley, 2007.
- [9] A. Hikmaturokhman, *Diktat Kuliah Gelombang Mikro*, Purwokerto: Akademi Teknik Telekomunikasi Sandhy Putra Purwokerto, 2007.
- [10] H. Lehpamer, *Microwave Transmission Networks Planning, Design and Deploymeny*, 3rd ed., vol. 53, no. 9. New York: McGraw-Hill, 2010.
- [11] R. L. Freeman, *Radio System Design For Telecommunications*, 3rd ed. New Jersey: John Wiley & Sons, 2007.
- [12] Aircom, “Microwave link planning training notes,” Surrey, 2004.
- [13] R. L. Freeman, *Telecommunication System Engineering*, New Jersey: John Wiley & Sons, 2004.
- [14] K. C. Wan, Q. Xue, X. Liu, and S. Y. Hui, “Passive radio-frequency repeater for enhancing signal reception and transmission in a wireless charging platform,” *IEEE Trans. Ind. Electron.*, vol. 61, no. 4, pp. 1750–1757, 2014.
- [15] G. Kizer, *Digital Microwave Communication Engineering Point-to-Point Microwave Systems*, New Jersey: John Wiley & Sons, 2013.
- [16] A. Hikmaturokhman and A. Wahyudin, *Perancangan Jaringan Gelombang Mikro Menggunakan Pathloss 5*, Yogyakarta: Pustaka Ilmu, 2018.
- [17] ITU-T, “ITU - T recommendation G.821 series G: transmission systems and media, digital systems and networks,” Geneva, 2002.
- [18] A. Hidayat, *et al.*, “Analisis carrier to interference transmisi gelombang mikrowave link X band dengan downlink satelit penginderaan jauh,” in *Prosiding Seminar Nasional Penginderaan Jauh 2014*, 2014, no. 70, pp. 2–10.

Copyright © 2020 by the authors. This is an open access article distributed under the Creative Commons Attribution License (CC BY-NC-ND 4.0), which permits use, distribution and reproduction in any medium, provided that the article is properly cited, the use is non-commercial and no modifications or adaptations are made.



Alfin Hikmaturokhman received the Bachelor’s degree in Electrical Engineering from University of Gadjah Mada (UGM), Yogyakarta, Indonesia, in 2002, and the Master’s degree in Electrical Engineering from Telkom University (Tel-U), Bandung, Indonesia, in 2011. He has published many journal

papers and conference proceedings. He is currently a lecturer at Faculty of Engineering, Institut Teknologi Telkom Purwokerto-Indonesia. His research interests are wireless, mobile communications, and ICT Regulation



Ade Wahyudin was born in Karawang Regency, West Java Province, Indonesia, in 1985. He received the Bachelor of Engineering degree from Telkom Institute of Technology, Bandung, 2010 and Master of Engineering Degree from Telkom Institute of Technology, Bandung, 2013, both in Electrical and

Telecommunication Engineering. He is currently work as lecturer in Sekolah Tinggi Multi Media of Ministry of Communication and Information Technology, Yogyakarta. His research interest include ICT Regulation and wireless communication



Subuh Pramono received the Bachelor’s degree in Telecommunication Engineering from STT Telkom, Bandung, Indonesia, in 2003, and the Master’s degree in Electrical Engineering from Institut Teknologi Bandung (ITB), Bandung, Indonesia, in 2009. He has published many journal papers and

conference proceedings. He is currently a lecturer at Department of Electrical Engineering, Faculty of Engineering, Universitas Sebelas Maret Surakarta-Indonesia. His research interests are wireless and mobile communications, antenna and propagation, wireless sensor networks.



Annisa Sarah has received the bachelor’s degree in Telecommunication Engineering from Telkom University, Bandung, in 2014, and worked at Huawei Tech Investment for 7 months after. She pursued her higher education in 2015 and received a M.Sc. degree in Electrical Engineering from KTH Royal

Institute of Technology, Stockholm, in 2017. Annisa is now a lecturer for the Electrical Engineering Bachelor Program at Atma Jaya Catholic University of Indonesia, Jakarta, Indonesia. Her current research focuses are in the areas of wireless systems and rural communication.



Arif Hidayat was born in Daerah Istimewa Yogyakarta in 1981. He received B.Eng. degree from Telkom University Bandung Indonesia in 2006 and M.Eng degree from Hasanuddin University Makassar Indonesia both in telecommunication engineering. His research interests are about satellite

communication and ground station support.



Winda Ekaliya Rinanda was born in Batu Balian City, south Kalimantan, Indonesia, in 1996. She received Bachelor of Engineering degree from Institut Teknologi Telkom Purwokerto, Indonesia, 2019 in Telecommunication Engineering