



FAKULTAS ILMU KOMPUTER  
UPN VETERAN JAKARTA

# PROCEEDINGS



3<sup>rd</sup> INTERNATIONAL CONFERENCE  
**ICIMCIS**  
INFORMATICS, MULTIMEDIA, CYBER, AND INFORMATION SYSTEM

ICIMCIS PROCEEDINGS 2021

2021



[2021 International Conference on Informatics, Multimedia, Cyber and Information System \(ICIMCIS\)](#) took place October 28-29, 2021 in virtual, Indonesia.

ISBN: 978-1-6654-2733-3 (ART) / 978-1-6654-2732-6 (USB)

Copyright and Reprint Permission: Abstracting is permitted with credit to the source. Libraries are permitted to photocopy beyond the limit of U.S. copyright law for private use of patrons those articles in this volume that carry a code at the bottom of the first page, provided the per-copy fee indicated in the code is paid through Copyright Clearance Center, 222 Rosewood Drive, Danvers, MA 01923. For reprint or republication permission, email to IEEE Copyrights Manager at [pubs-permissions@ieee.org](mailto:pubs-permissions@ieee.org). All rights reserved. Copyright © 2021 by IEEE.

# **2021 International Conference on Informatics, Multimedia, Cyber and Information System (ICIMCIS)**

## **Organizing Committee International Advisory Committee**

- Dr. Ing Wahyudi Hasbi, S.Si, M.Kom. - IEEE IS Chair  
Prof. Dr. Ir. Gamantyo Hendratoro, Ph.D. - IEEE IS Vice-Chair  
Ir. Linawati, M.Eng.Sc., Ph.D. - IEEE IS Secretary  
Dr. Karlisa Priandana, M.Eng - IEEE IS Vice Secretary  
Dr. Kemas Muslim Lhaksmana - IEEE IS Treasurer  
Dr. Prima Dewi Purnamasari, S.T., M.Sc - IEEE IS Vice Treasurer  
Dr. Erna Hernawati, AK., CPMA, CA. – Rector Universitas Pembangunan Nasional Veteran  
Jakarta, Indonesia  
Dr. Antar Venus, M.Comm. – Rector Universitas Pembangunan Nasional Veteran Jakarta,  
Indonesia  
Dr. Drs. Ec. Prasetyo Hadi, MM. – Vice Rector Universitas Pembangunan Nasional Veteran  
Jakarta, Indonesia  
Dr. dr. Ria Maria Theresa, Sp.KJ., MH. – Vice Rector Universitas Pembangunan Nasional  
Veteran Jakarta, Indonesia

## **Steering Committee**

- Prof. Dr. Ir. Eko Indrajit, M.Sc., MBA., Mphil., MA – Ketua APTIKOM  
Prof. Dr. Achmad Benny Mutiara Q.N. – Universitas Gunadarma, Indonesia  
Prof. Dra. Sri Hartati, M.Sc., Ph.D – Universitas Gajah Mada, Indonesia  
Prof. Zainal A. Hasibuan, M.Sc., Ph.D – Universitas Dian Nuswantoro, Indonesia  
Prof. Dr.Ir. Agus Buono, M.Si, M.Kom – IPB University  
Prof. Dr. Ir. Siti Nurmaini, MT – Universitas Sriwijaya, Indonesia  
Dr. Djuniadi, MT – Universitas Negeri Semarang, Indonesia  
Dr. Ermatita, M.Kom – Universitas Sriwijaya, Indonesia

## **General Chair**

- Mayanda Mega Santoni, S.Komp, M.Kom. – Universitas Pembangunan Nasional Veteran  
Jakarta, Indonesia

## **General Co-Chairs**

- Desta Sandya Prasvita, S.Komp., M.Kom. – Universitas Pembangunan Nasional Veteran  
Jakarta, Indonesia

## **Secretarial**

- Erly Krisnanik, S.Kom., MM MM - Universitas Pembangunan Nasional Veteran Jakarta,  
Indonesia  
Hamonangan Kinantan Prabu, ST., MT - Universitas Pembangunan Nasional Veteran Jakarta,  
Indonesia  
Suryadi, Am.Kom. - Universitas Pembangunan Nasional Veteran Jakarta, Indonesia  
Diyah Retnowati, S.Kom - Universitas Pembangunan Nasional Veteran Jakarta, Indonesia  
Fitriah Ningsih, S.Kom - Universitas Pembangunan Nasional Veteran Jakarta, Indonesia  
Ika Marbela, S.Kom - Universitas Pembangunan Nasional Veteran Jakarta, Indonesia

### **Event, Publicity, Website & Documentation Division**

Dra. Yulnelly, M.Si – Universitas Pembangunan Nasional Veteran Jakarta, Indonesia  
Ria Astriratma, S.Kom, M.Cs - Universitas Pembangunan Nasional Veteran Jakarta,  
Indonesia  
Andhika Octa Indarso, MMSI - Universitas Pembangunan Nasional Veteran Jakarta,  
Indonesia  
Catur Nugraheni PD., M.Kom - Universitas Pembangunan Nasional Veteran Jakarta,  
Indonesia  
Astrianto Afandi Am.Kom. - Universitas Pembangunan Nasional Veteran Jakarta, Indonesia  
Didit Suharyantono, S.Kom - Universitas Pembangunan Nasional Veteran Jakarta, Indonesia  
Moch. Fariz Satyawan, S.Kom. - Universitas Pembangunan Nasional Veteran Jakarta,  
Indonesia

### **Proceeding Division**

Kraugusteeliana, M. Kom, MM – Universitas Pembangunan Nasional Veteran Jakarta,  
Indonesia  
Nurul Chamidah, S.Kom., M.Kom – Universitas Pembangunan Nasional Veteran Jakarta,  
Indonesia  
Helena Nurramdhani Irmanda, S.Pd., M.Kom – Universitas Pembangunan Nasional Veteran  
Jakarta, Indonesia  
Ika Nurlaili Isnainiyah, S.Kom, MSc – Universitas Pembangunan Nasional Veteran Jakarta,  
Indonesia  
I Wayan Widi Pradnyana, S.Kom., M.T.I. – Universitas Pembangunan Nasional Veteran  
Jakarta, Indonesia  
Artika Arista, S.Kom., MMSI – Universitas Pembangunan Nasional Veteran Jakarta,  
Indonesia  
Muhammad Adrezo, SKom, MSc – Universitas Pembangunan Nasional Veteran Jakarta,  
Indonesia

### **Financial**

Rudhy Ho Purabaya, SE, MMSi – Universitas Pembangunan Nasional Veteran Jakarta,  
Indonesia  
Yami - Universitas Pembangunan Nasional Veteran Jakarta, Indonesia.  
Mijo, Am.Kom– Universitas Pembangunan Nasional Veteran Jakarta, Indonesia.

### **Administration & Logistic**

Musenah, Spd, M.Kes – Universitas Pembangunan Nasional Veteran Jakarta, Indonesia  
Muryono , Am. Kom– Universitas Pembangunan Nasional Veteran Jakarta, Indonesia  
Saimin, S.Kom – Universitas Pembangunan Nasional Veteran Jakarta, Indonesia  
Zaenudin - Universitas Pembangunan Nasional Veteran Jakarta, Indonesia

## Table of Content

### **Challenges of Inter-Organizational Information Security in Healthcare Services: Health Regulator's Perspective..... 1**

Puspita Kencana Sari and Putu Wuri Handayani (Universitas Indonesia, Indonesia); Achmad Hidayanto and Rizal Aji (University of Indonesia, Indonesia); Setiadi Yazid (Universitas Indonesia, Indonesia) ..... 1

### **Information System Security Analysis to Determine Server Security Vulnerability With Penetration Testing Execution Standard (PTES) Method at VWX University ... 7**

Alvita Izana Kusumarini (Universitas Pembangunan Nasional Veteran Jakarta, Indonesia); Henki Seta (Universitas Pembangunan Nasional Veteran, Indonesia) ..... 7

### **Conformity Analysis of HTTP Strict Transport Security (HSTS) Configuration and Implementation Using Bettercap Tools ..... 13**

Amiruddin Amiruddin (Sekolah Tinggi Sandi Negara & Badan Siber dan Sandi Negara, Indonesia); Daffa Akbar Putra (Politeknik Siber dan Sandi Negara, Indonesia); Rizky Ainur Rofiq (Politeknik Siber Dan Sandi Negara, Indonesia) ..... 13

### **Cyber-Risk Management Planning Using NIST CSF v1.1, NIST SP 800-53 Rev. 5, and CIS Controls v8..... 19**

Amiruddin Amiruddin (Sekolah Tinggi Sandi Negara & Badan Siber dan Sandi Negara, Indonesia); Hafizh Ghozie Afiansyah and Hernowo Adi Nugroho (Politeknik Siber dan Sandi Negara, Indonesia) ..... 19

### **Deep Learning for Malware Classification Platform Using Windows API Call Sequence..... 25**

Wahyu Rendra Aditya and Giri Noto (Politeknik Siber dan Sandi Negara, Indonesia); Raden Budiarto Hadiprakoso (Poltek Siber dan Sandi Negara, Indonesia); Adam Waluyo (Politeknik Siber dan Sandi Negara, Indonesia) ..... 25

### **Modified RNP Privacy Protection Data Mining Method as Big Data Security ..... 30**

Ray Novita Yasa (Poltek Siber Dan Sandi Negara, Indonesia); I Komang Buana (Poltek Siber dan Sandi Negara, Indonesia); Giri Noto (Politeknik Siber dan Sandi Negara, Indonesia); Hermawan Setiawan (Sekolah Tinggi Sandi Negara, Indonesia); Raden Budiarto Hadiprakoso (Poltek Siber dan Sandi Negara, Indonesia) ..... 30

### **Exploitation Prevention on Network Printer With Signature-Based Suricata on PfSense ..... 35**

Fajar Subkhi Sulaiman (Universitas Pembangunan Nasional Veteran Jakarta, Indonesia); Henki Seta (Universitas Pembangunan Nasional Veteran, Indonesia); Noor Falih (Universitas Pembangunan Nasional Veteran Jakarta, Indonesia) ..... 35

### **A Study on Medicinal Plant Leaf Recognition Using Artificial Intelligence..... 40**

Vina Ayumi (Universitas Mercu Buana Jakarta, Indonesia); Ermatita Ermatita (Sriwijaya University & Computer Science Faculty, Indonesia); Abdiansah Abdiansah (Universitas Sriwijaya, Indonesia); Handrie Noprisson (Universitas Mercu Buana, Indonesia); Mariana Purba (Politeknik Anika Palembang, Indonesia); Marissa Utami (Universitas Muhammadiyah Bengkulu, Indonesia)..... 40

**Prospect Prediction Model of Indonesian Telematics Medium and Large Enterprises Using Ensemble Approach..... 46**

Eneng Tita Tosida and Fajar Delli Wihartiko (IPB University & Universitas Pakuan, Indonesia); Agnes Dewi (Universitas Pakuan, Indonesia); Indra Permana Solihin (Universitas Pembangunan Nasional Veteran Jakarta, Indonesia) ..... 46

**Implementation of K-Medoid and Hierarchical Clustering for Strengthening Job Satisfaction on the Teacher Profession ..... 53**

Eneng Tita Tosida (IPB University & Universitas Pakuan, Indonesia); Irma Anggraeni and Suci Utami (Universitas Pakuan, Indonesia); Indra Permana Solihin (Universitas Pembangunan Nasional Veteran Jakarta, Indonesia) ..... 53

**CNN Architecture on Distinguishing Art and Photo: A Comparison ..... 59**

Herlambang Dwi Prasetyo (Universitas Pembangunan Nasional Veteran Jakarta, Indonesia); Pandu Ananto Hogantara, Irzan Fajari Nurahmadan and Roihan Mufli Arjuna (University of Pembangunan Nasional Veteran Jakarta, Indonesia); Ika Nurlaili Isnainiyah and Rio Wirawan (Universitas Pembangunan Nasional Veteran Jakarta, Indonesia)..... 59

**Energy Management and Anomaly Detection in Condition Monitoring for Industrial Internet of Things Using Machine Learning ..... 65**

Dominic Okeke and Sarhan M. Musa (Prairie View A&M University, USA)..... 65

**Sentiment Analysis of COVID-19 Vaccines From Indonesian Tweets and News Headlines Using Various Machine Learning Techniques ..... 69**

Retnani Latifah, Ridwan Baddalwan, Popy Meilina, Ambar Dwi Saputra and Yana Adharani (Universitas Muhammadiyah Jakarta, Indonesia) ..... 69

**Happy and Sad Classification Using HOG Feature Descriptor in SVM Model Selection ..... 74**

Derry Alamsyah (Universitas Multi Data Palembang); Muhammad Fachrurrozi (Universitas Sriwijaya & Computer Science Faculty, Indonesia)..... 74

**A Hybrid System for Enhancement Retinal Image Reduction..... 80**

Anita Desiani (Universitas Sriwijaya, Indonesia); Muhammad Adrezo (Universitas Pembangunan Nasional Veteran Jakarta, Indonesia); Anggi Alfian and Erwin E (Universitas Sriwijaya, Indonesia); Bambang Suprihatin (University of Sriwijaya, Indonesia)..... 80

**Author Matching Classification on A Highly Imbalanced Bibliographic Data Using Cost-Sensitive Deep Neural Network..... 86**

Firdaus Firdaus and Suci Dwi Lestari (Universitas Sriwijaya, Indonesia); Siti Nurmaini (University of Sriwijaya, Indonesia); Reza Firsandaya Malik (University of Sriwijaya & Faculty of Computer Science, Indonesia); Muhammad Naufal Rachmatullah (Universitas Sriwijaya, Indonesia); Annisa Darmawahyuni (University of Sriwijaya, Indonesia); Ade Sapitri (Universitas Sriwijaya, Indonesia); Mohammad El Qiliqsandy (Sriwijaya University & Intelligent System Research Group, Indonesia).. 86

**Hand-Woven Fabric Motif Recognition Methods: A Systematic Literature Review.. 90**

Handrie Noprisson (Universitas Mercu Buana, Indonesia); Ermatita Ermatita (Sriwijaya University & Computer Science Faculty, Indonesia); Abdiansah Abdiansah (Universitas Sriwijaya, Indonesia); Vina Ayumi (Universitas Mercu Buana Jakarta, Indonesia); Mariana Purba (Politeknik Anika Palembang, Indonesia); Marissa Utami (Universitas Muhammadiyah Bengkulu, Indonesia)..... 90

**DevSecOps Approach in Software Development Case Study: Public Company Logistic Agency..... 96**

Muhamad Efendi (University of Indonesia & Perum BULOG, Indonesia); Teguh Raharjo (Universitas Indonesia, Indonesia); Agus Suhanto (University of Indonesia, Indonesia)..... 96

**Wikuliner - Regional Culinary Recommendation System Based on the Web Using Extreme Programming Method..... 102**

Sirojul Munir (IPB University & Nurul Fikri College of Technology, Indonesia); Imam Haromain (Sekolah Tinggi Teknologi Nurul Fikri, Indonesia); Riyan Wahyudi (STT Nurul Fikri & None, Indonesia); Misna Asqia (Sekolah Tinggi Teknologi Terpadu Nurul Fikri, Indonesia); Ridwan Raafi'udin (Universitas Pembangunan Nasional Veteran Jakarta, Indonesia)..... 102

**Challenges of DevOps Implementation: A Case Study From Technology Companies in Indonesia..... 108**

Rayhan Anandya (University of Indonesia, Indonesia); Teguh Raharjo (Universitas Indonesia, Indonesia); Agus Suhanto (University of Indonesia, Indonesia)..... 108

**Intention to Use E-Marketing in Small and Medium Enterprises in the Covid-19 Pandemic..... 114**

Lung Thi Kieu Oanh, Nguyen Thi Phuong Thao and Bui Thanh Khoa (Industrial University of Ho Chi Minh City, Vietnam) ..... 114

**Trend Moment Implementation in Forecasting Vehicle Sales at PT. Thamrin Group Palembang ..... 120**

Rahmat Novrianda Dasmen (Universitas Bina Darma, Indonesia); Kraugusteeliana Tambunan (Universitas Pembangunan Nasional, Indonesia); Rasmila Rasmila (Universitas Bina Darma, Indonesia)..... 120



**Sentiment Analysis of Big Cities on the Island of Java in Indonesia From Twitter Data as A Recommender System ..... 124**

Boby Siswanto (Bina Nusantara University, Indonesia); Ford Gaol (Bina Nusantara University, Jakarta, Indonesia); Benfano Soewito (Bina Nusantara University, Indonesia); Harco Leslie Hendric Spits Warnars (Bina Nusantara University & Doctor of Computer Science, Indonesia) ..... 124

**Implementation of K-Medoids Clustering Algorithm for Grouping Palm Oil Exports by Destination Country ..... 129**

Deny Haryadi and Demi Adidrana (Institut Teknologi Telkom Jakarta, Indonesia) .. 129

**"F.Q.A.M" Feyn-QLattice Automation Modelling: Python Module of Machine Learning for Data Classification in Water Potability ..... 135**

Prismahardi Aji Riyantoko, Sugiarto Sugiarto and I Gede Susrama Mas Diyasa (Universitas Pembangunan Nasional Veteran Jawa Timur, Indonesia); Kraugusteeliana Tambunan (Universitas Pembangunan Nasional, Indonesia) ..... 135

**Design and Build an Android-Based Waste Pickup Information System Using the Extreme Programming Method (Case Study: BUMDes Cahaya Buana Paku)..... 142**

I Wayan Widi Pradnyana (Universitas Pembangunan Nasional Veteran Jakarta, Indonesia); Abdullah Fahmi and Ati Zaidiah (UPN Veteran Jakarta, Indonesia); M Bayu Wibisono (University of Pembangunan Nasional Veteran Jakarta, Indonesia); Bambang T Wahyono (Universitas Pembangunan Nasional Veteran Jakarta, Indonesia); Rudhy Purabaya (UPN Veteran Jakarta, Indonesia) ..... 142

**Understanding E-Wallet Usage in Indonesia During the Covid-19 Pandemic: Focus on Trust and Risk..... 148**

Arta Moro Sundjaja and Evelyn Evelyn (Bina Nusantara University, Indonesia)..... 148

**Factors Affecting Buyer Satisfaction of Coffee Beans at the Online Marketplace in Indonesia ..... 155**

Arta Moro Sundjaja, Dadik Shukurnianto, Ary Putra Rulvi and Raditya Hardianto Putra (Bina Nusantara University, Indonesia)..... 155

**Agile Readiness Measurement in Organizations Using Agile Adoption Framework: A Case Study on Indonesian Automotive Company..... 162**

Raden Abi Hanindito (Indonesia University, Indonesia); Teguh Raharjo and Bob Hardian (Universitas Indonesia, Indonesia); Agus Suhanto (University of Indonesia, Indonesia) ..... 162

**The Challenges in Integrated Personal Health Record Adoption in Indonesia: A Qualitative Analysis of Regulatory Perspectives ..... 169**



Nabila Clydea Harahap (University of Indonesia, Indonesia); Putu Wuri Handayani (Universitas Indonesia, Indonesia); Achmad Hidayanto (University of Indonesia, Indonesia) .....	169
<b>Challenges and Solution Recommendation in Large-Scale Agile Implementation: A Systematic Literature Review .....</b>	<b>175</b>
Dika Swadani Ekasari, Teguh Raharjo and Adi Prasetyo (Universitas Indonesia, Indonesia) .....	175
<b>Inter-Organizational Data Sharing: What Issues Should Be Considered? .....</b>	<b>181</b>
Dewi Puspasari (Universitas Indonesia, Indonesia); Achmad Hidayanto (University of Indonesia, Indonesia); Suryana Setiawan (Universitas Indonesia, Indonesia) .....	181
<b>The Acceptance of Pay Later Payment Usage on Business-To-Consumer Online Marketplace in Indonesia .....</b>	<b>187</b>
Salsabila Maurizka (University of Indonesia, Indonesia); Putu Wuri Handayani and Ave Adriana Pinem (Universitas Indonesia, Indonesia) .....	187
<b>The Effect of Monthly Promotion, Gamification, User Interface Usability &amp; Attractiveness on the Marketplace Repurchase Intention .....</b>	<b>193</b>
Darrell Matthew, Garry R. Hellianto, Niko S. Putra and Arta Moro Sundjaja (Bina Nusantara University, Indonesia) .....	193
<b>UI Analysis and Redesign of a Simpul Seribu Website Using Cognitive Walkthrough Method .....</b>	<b>200</b>
Mursyid Azhar, Erly Krisnanik, Rio Wirawan and Intan Indriana (Universitas Pembangunan Nasional Veteran Jakarta, Indonesia) .....	200
<b>SIMTEKDIN of Covid-19 Using Forward Chaining Based on Android Mobile .....</b>	<b>207</b>
Erly Krisnanik, Nadia Imawangi and Helena Nurramdhani Irmanda (Universitas Pembangunan Nasional Veteran Jakarta, Indonesia) .....	207
<b>Actual Use of Transactional Video on Demand: The Extended of Technology Acceptance Model .....</b>	<b>213</b>
Yasmin Amalia (Faculty of Computer Science, Universitas Indonesia, Indonesia); Putu Wuri Handayani and Ika Hapsari (Universitas Indonesia, Indonesia) .....	213
<b>Feedback in a Mediated WhatsApp Online Learning: A Case of Indonesian EFL Postgraduate Students .....</b>	<b>220</b>
Ahmad Sugianto, Ilham Agung Prasetyo, Devi Andriyani and Eva Nurdiana (Universitas Pendidikan Indonesia, Indonesia) .....	220
<b>Measuring Knowledge Management System Utilization by Government in Various Countries .....</b>	<b>226</b>
Herlambang Permadi and Dana Indra Sensuse (University of Indonesia, Indonesia)	226

**A Brief Study on Cybercrimes and Practices in Mizoram..... 232**

Jamal Hussain, Vanlalruata Hnamte and Laldinsangi Tlaisun (Mizoram University, India) ..... 232

**Constructing Smart Digital Media for Museum Education Post Pandemic Recovery: A Review and Recommendation..... 238**

Shinta Puspasari (Universitas Indo Global Mandiri, Indonesia); Ermatita Ermatita (Sriwijaya University & Computer Science Faculty, Indonesia); Zulkardi Zulkardi (Universitas Sriwijaya, Indonesia) ..... 238

**The Effect of Cyberbullying in Multi-Player Online Gaming Environments: Gamer Perceptions..... 244**

Sekar W Prasetyaningtyas and Aldo Prayogo (Binus Business School, Binus University, Indonesia) ..... 244

**The Meaning of User Satisfaction and Continuance Intentions With Video Conference Applications..... 250**

Alya Isti Safira, Putu Wuri Handayani and Ave Adriana Pinem (Universitas Indonesia, Indonesia) ..... 250

**Spectrum Analysis of Digital Piano Audio Signal..... 257**

Jia Zhu (Hainan Tropical Ocean University, China); Kun Zhang (Hainan University & Hainan Tropical Ocean University, China); Lan Zang (Hainan University, China); Darryl Franck Nsalo Kong (Hainan University, Cameroon) ..... 257

**Measuring Programmer Quality From Complexity Point of View..... 262**

Debby Debora Hutajulu (Del Institute of Technology, Indonesia); Mario E. S. Simaremare, Yessi Sovranita Pangaribuan and Angelia Regina Ginting (Institut Teknologi Del, Indonesia) ..... 262

**Utilization of Pose Estimation and Multilayer Perceptron Methods in the Development of Taekwondo Martial Arts Independent Learning ..... 267**

Irzan Fajari Nurahmadan (University of Pembangunan Nasional Veteran Jakarta, Indonesia); Jayanta Jayanta and I Wayan Widi Pradnyana (Universitas Pembangunan Nasional Veteran Jakarta, Indonesia) ..... 267

**Building Indonesian Music Dataset: Collection and Analysis ..... 273**

Octaviano Pratama (UPN Veteran Jakarta, Indonesia); Pamela Kareen (BISA AI Academy, Indonesia); Ermatita Ermatita (Sriwijaya University & Computer Science Faculty, Indonesia) ..... 273

**A Mobile Based Waste Classification Using MobileNets-V1 Architecture ..... 279**

Irzan Fajari Nurahmadan and Roihan Mufli Arjuna (University of Pembangunan Nasional Veteran Jakarta, Indonesia); Herlambang Dwi Prasetyo (Universitas Pembangunan Nasional Veteran Jakarta, Indonesia); Pandu Ananto

Hogantara (University of Pembangunan Nasional Veteran Jakarta, Indonesia); Ika Nurlaili Isnainiyah and Rio Wirawan (Universitas Pembangunan Nasional Veteran Jakarta, Indonesia)..... 279

**Successful Cases of Smart Tourism Construction on Analysis and Research -- Taking Hangzhou and Xiamen as Examples ..... 285**

Kun Zhang (Hainan University & Hainan Tropical Ocean University, China); Jia Zhu, Yanwen Gao and Liuyi Zhao (Hainan Tropical Ocean University, China); Vaniushkina Din (Hainan Tropical Ocean University, Russia); Siyu Teng (Hainan Tropical Ocean University, China); Kaparova Kumushai (Hainan Tropical Ocean University, Kyrgyzstan)..... 285

**Implementation of Long Short Term Memory Model in Forecasting Internet Service Sales ..... 291**

Pradista Aprilia Winarno (University of Pembangunan Nasional Veteran Jakarta, Indonesia); Ermatita Ermatita (Sriwijaya University & Computer Science Faculty, Indonesia); Sarika Afrizal (Universitas Pembangunan Nasional Veteran Jakarta, Indonesia)..... 291

**Word Expansion Using Synonyms in Indonesian Short Essay Auto Scoring ..... 296**

Nurul Chamidah (UPN Veteran Jakarta, Indonesia); Mayanda Mega Santoni, Helena Nurramdhani Irmanda, Ria Astriratma and Lomo Mula Tua (Universitas Pembangunan Nasional Veteran Jakarta, Indonesia); Trihastuti Yuniati (Institut Teknologi Telkom Purwokerto, Indonesia) ..... 296

**Face Recognition Using Convolutional Neural Network Architectures on Mask-Occluded Face Images ..... 301**

Muhammad A Raihan, Jayanta Jayanta and Mayanda Mega Santoni (Universitas Pembangunan Nasional Veteran Jakarta, Indonesia) ..... 301

**Comparison of Distance Metrics on Fuzzy C-Means Algorithm Through Customer Segmentation ..... 307**

Uus Rusdiana, In Ernawati, Noor Falih and Artika Arista (Universitas Pembangunan Nasional Veteran Jakarta, Indonesia)..... 307

**Effect of the Learning Rate, Hidden Layer, and Epoch in Lung Cancer Prediction 312**

Yuni Widiastiwi and Dewi Hajar (Universitas Pembangunan Nasional Veteran Jakarta, Indonesia)..... 312

**Data Integration Readiness Analysis in Merged Telecommunication Company ..... 317**

Nugroho Wibisono (Swiss German University & PT Telkom Satelit Indonesia (Telkomsat), Indonesia); Amin Soetomo and Heru Ipung (Swiss German University, Indonesia); Marastika Wicaksono Aji bawono (Swiss German University & Telkom Satelit Indonesia, Indonesia); Eka Budiarto (Swiss German University, Indonesia).. 317

**Business Intelligence and Analytics in Dairy Goat Livestock: Current and Future Challenge ..... 323**

Alusyanti Primawati (IPB University, Indonesia); Imas Sukaesih Sitanggung (Bogor Agricultural University, Indonesia); Annisa Annisa and Dewi Apri Astuti (IPB University, Indonesia) ..... 323

**The Effect of Sales Promotion, Self-Control, and Hedonism on Impulsive Buying in E-Commerce Platform During the COVID-19 Pandemic ..... 330**

Clarissa Victoria, Jaimee Tumewa Diets, Vania Kalyana and Peri A. Manaf (Bina Nusantara University, Indonesia) ..... 330

**A Systematic Literature Review of Knowledge Sharing Practices in Academic Institutions ..... 337**

Mariana Purba (Politeknik Anika Palembang, Indonesia); Ermatita Ermatita (Sriwijaya University & Computer Science Faculty, Indonesia); Abdiansah Abdiansah (Universitas Sriwijaya, Indonesia); Vina Ayumi (Universitas Mercu Buana Jakarta, Indonesia); Handrie Noprisson and Anita Ratnasari (Universitas Mercu Buana, Indonesia) ..... 337

**Enterprise System Modeling for Business Licensing Services ..... 343**

Muhammad Mahreza Maulana, Arif Imam Suroso, Yani Nurhadryani and Kudang Seminar (IPB University, Indonesia) ..... 343

**Content Characteristics of Government Social Media and the Impact on Citizen Engagement Rate ..... 349**

Diah Henisa and Nori Wilantika (Politeknik Statistika STIS, Indonesia) ..... 349

**The Factors Influencing Millennials' Continuance Intention to Use Subscription Video-On-Demand (SVoD) in Jakarta ..... 356**

Eric Zenas Kurniawan (BINUS BUSINESS SCHOOL, Indonesia); Grant Denov Marulam Tobing (Binus Business School, Indonesia); Nabil Naratama (Universitas Bina Nusantara & Binus Business School, Indonesia); Adilla Anggraeni (Bina Nusantara University, Indonesia) ..... 356

**One Data ASN Framework (ODAF) for Indonesian State Civil Apparatus ..... 363**

Elin Cahyaningsih and Natascha Silalahi (Badan Kepegawaian Negara, Indonesia); Handrie Noprisson (Universitas Mercu Buana, Indonesia); Vina Ayumi (Universitas Mercu Buana Jakarta, Indonesia) ..... 363

**Application of Digital Map Technology for Selection of the Fastest Path in the Smart City of Jakarta ..... 369**

Arman Syah Putra (University of Bina Nusantara, Indonesia); Slamet Heri Winarno (Bina Sarana Informatika University, Indonesia); Amat Damuri (STMIK Al Muslim, Indonesia); Rio Wirawan (Universitas Pembangunan Nasional Veteran Jakarta, Indonesia); Nurul Aisyah (Bina Sarana Informatika University, Indonesia); Nur Kumala

Dewi (STMIK Muhammadiyah Jakarta, Indonesia); Ridwan Anwar (Bhayangkara Jakarta Raya University, Indonesia); Ahmad Ishaq (Akademi Manajemen Informatika dan Komputer BSI Bekasi, Indonesia); Jeffry Latumahina (Bina Sarana Informatika University, Indonesia) ..... 369

**An Information System Design of Web-Based Student Learning Outcomes Assessment at Pekayon Jaya VI Elementary School..... 375**

Ayura Safa Chintami and Ria Astriratma (Universitas Pembangunan Nasional Veteran Jakarta, Indonesia)..... 375

# Word Expansion using Synonyms in Indonesian

## Short Essay Auto Scoring

1<sup>st</sup> Nurul Chamidah  
Faculty of Computer Science  
Universitas Pembangunan Nasional  
Veteran Jakarta  
Jakarta, Indonesia  
nurul.chamidah@upnvj.ac.id

2<sup>nd</sup> Mayanda Mega Santoni  
Faculty of Computer Science  
Universitas Pembangunan Nasional  
Veteran Jakarta  
Jakarta, Indonesia  
megasantoni@upnvj.ac.id

3<sup>rd</sup> Helena Nurramdhani Irmanda  
Faculty of Computer Science  
Universitas Pembangunan Nasional  
Veteran Jakarta  
Jakarta, Indonesia  
helenairmanda@upnvj.ac.id

4<sup>th</sup> Ria Astriratma  
Faculty of Computer Science  
Universitas Pembangunan Nasional  
Veteran Jakarta  
Jakarta, Indonesia  
astriratma@upnvj.ac.id

5<sup>th</sup> Lomo Mula Tua  
Faculty of Computer Science  
Universitas Pembangunan Nasional  
Veteran Jakarta  
Jakarta, Indonesia  
lomomt@upnvj.ac.id

6<sup>th</sup> Trihastuti Yuniati  
Fakultas Informatika  
Institut Teknologi Telkom Purwokerto  
Banyumas, Indonesia  
trihastuti@ittelkom-pwt.ac.id

**Abstract**— Exams conducted in online learning to evaluate learning processes have many formats, including essay format. Essays are considered more proper to measure learning activity results. However, essays require longer to assess student answers and have consistency problems if the assessment is carried out by different teachers or done separately. This study investigates the influence of word expansion using synonyms in Indonesian thesaurus on short essay auto scoring. The first step, reference answers and student answer text data is preprocessed by case folding, stemming, stop word removal, tokenizing, and duplicate word removal. Second, Word expansion using synonyms in thesaurus is used to generate alternate words for reference answers. Third step, the scoring process by calculating similarity and matching words. The score from the similarity and matching results is then used to generate the final score. Performance evaluation shows that the Dice Coefficient similarity method achieved the highest correlation by a very good correlation, and the smallest MAE was achieved by the Cosine Coefficient similarity method.

**Keywords**—*essay auto scoring, word expansion, synonym, thesaurus*

### I. INTRODUCTION

Online learning or e-learning is currently applied in learning activities to deliver learning materials, assignments, and exams. Exams conducted to evaluate learning processes have many formats in online learning. Questions format commonly used to assess a lesson generally consists of two general formats, objective questions, and essay questions. Objective questions have answer choices that students can choose, such as multiple choice answers, matching answers, and true-false answers. Meanwhile, essay questions do not have answer choices. Students need to write their sentences to answer this question format. For example, write a free essay that does not use an answer key, and usually, teachers need to pay more attention to its grammar. There is also an essay question model that asks students to explain or describe something where the explanation has reference answers as the key answers.

Essay questions are considered more useful to estimate the depth of knowledge received by students from teaching [1] than objective questions that are easy to apply but difficult to measure the level of understanding. Although essays are considered more appropriate to measure the results of learning activities, this form of question requires a longer time to assess answers than evaluation of objective questions. Another problem assessing essay questions is the problem of

consistency in both the same and different evaluators. Evaluation of essay questions by one person, inconsistency can occur if the review is carried out separately. Moreover, if other teachers carry out the assessment, they can get different scores on the same answer. Based on this explanation, it is necessary to create an auto scoring system to automatically assess essays to be more consistent.

Studies on automatic essay scoring in Indonesian have been done before. However, according to [2], there is not yet the most suitable method to use because automatic scoring system must provide an answer score as close as possible to the score given by human evaluators. The other problems, the resources for Indonesian are not as many as the resources in English. Studies [3]–[6] uses Latent Semantic Analysis (LSA) which maps keywords from student answers with keywords from reference answers into a matrix. Another study uses the Vector Space Model technique by word vectorizing using TF-IDF (Term Frequency-Inverse Document Frequency). It calculates cosine similarity between student answers and reference answers by taking keywords from these answers [7]. Study [8] utilizes lexical features in Natural Language Processing (NLP) by finding synonyms of words and then comparing between reference answers and student answers.

Scoring techniques for automatic essay scoring are also very diverse. In general, the assessment technique calculates closeness or similarity between the reference answer and student answer. The scoring method based on the similarity of keywords in a study [9] compares the scoring technique with the Longest Common Subsequence (LCS), Cosine Coefficient (CC), Jaccard Coefficient (JC), and Dice Coefficient (DC) in Indonesian short essays, also [10] comparing the last three methods. Likewise, some studies compare Cosine Similarity, Euclidean Distance, and Jaccard Coefficient [11]. Research [12] used K-Nearest Neighbour (KNN) to calculate the closeness between reference and student answers. Manhattan distance and dice similarity were used in the study [11] to calculate similarity answers and reference answers.

Word expansion can improve accuracy in text-based classification [13]. Word expansion using Indonesian thesaurus in the question answering system also shows better results than without using the query expansion [14]. Query expansion using Malay thesaurus also improve retrieval effectiveness[15].

This study aims to investigate the influence of word expansion using synonyms in Indonesian thesaurus to short

essay auto scoring. This expansion applied to reference answers as alternative words to enrich terms. These enriching terms are carried out to increase the chance of similarity between reference answers and student answers.

## II. METHODOLOGY

Fig.1 shows the method used in this study. The dataset contains text and numeric data types. Text data types consist of reference answers and student answers, and numeric data types consist of three scores for each student answer given by teachers. Preprocessing was conducted to reference answers and student answers. Word expansion using synonyms from Indonesian thesaurus is undertaken to expand preprocessed reference answers. The next step is calculating the similarity score and keyword matching score to obtain the final score. Finally, this study carries out performance evaluation to measure agreement between score given by teacher and score generated by the system.

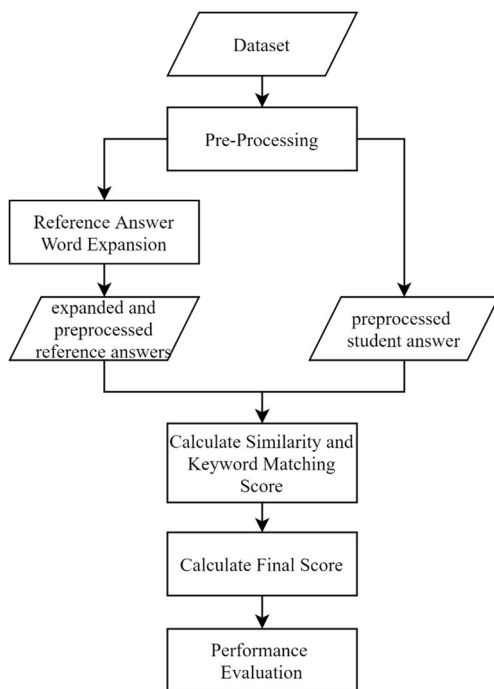


Fig. 1. Methodology

### A. Dataset

The dataset used in this study consisted of 40 questions and reference's answer texts for related questions and 2162 answers obtained and used in previous studies [2], [16]. These 40 questions are divided into four categories they are politics, lifestyle, sport, and technology. The final numeric score for each student's answer is in the range [0, 100] that three teachers give. The data sample can be seen in TABLE I.

TABLE I. DATA SAMPLE

Feature	Value
Question	Apa yang dimaksud dengan volatile memory?
Reference Answer	Volatile memory adalah memory yang datanya dapat ditulis dan dihapus, tetapi hilang saat kehilangan power (kondisi off atau mati lampu).
Student Answer	Volatile merupakan memory yang datanya dapat ditulis serta dihapus, tetapi akan hilang jika tidak ada aliran

Feature	Value
	listrik (kondisi mati/off) dan membutuhkan daya untuk mempertahankan memory.
Score 1	88
Score 2	100
Score 3	90

### B. Preprocessing

Text preprocessing is done on student's answers and reference's answers. This process consists of several steps. They are case folding, stemming, stop word removing, tokenizing, and duplicate word removal. TABLE II. shows preprocessing from students answer and reference answer from TABLE I. Preprocessing stage which will be explained as follows:

- Case folding is a process to convert all characters into lowercase letters. This process includes removing all character's non-alphabet and punctuation. For example, the word "Volatile" became "volatile".
- Stemming is a technique that converts the word into root words. It removes prefixes, suffixes, and affixes. Sastrawi library based on Nazief-Adriani algorithm [17] is used to conduct this process. For example, words "datanya", "ditulis", "dihapus", etc. After stemming process, words became root words "data", "tulis", "hapus", etc.
- Stop word removing is used to remove words that have no meaning and usually have high occurrences. In this study, Sastrawi library stop word list is used to remove stop words. For example, words "yang", "dapat", "tetapi", "dan", "untuk" were removed from sentences.
- Tokenizing is a process to separate words from the text. Indonesian text separating words by using space characters.
- Duplicate Word Removal is a process to remove duplicate words. For example, word "volatile" and "hilang" has two occurrences in reference answers.

TABLE II. PREPROCESSING

	Student Answer	Reference Answer
Case folding	volatile merupakan memory yang datanya dapat ditulis serta dihapus tetapi akan hilang jika tidak ada aliran listrik kondisi mati off dan membutuhkan daya untuk mempertahankan memory	volatile memory adalah memory yang datanya dapat ditulis dan dihapus tetapi hilang saat kehilangan power kondisi off atau mati lampu
Stemming	volatile rupa memory yang data dapat tulis serta hapus tetapi akan hilang jika tidak ada alir listrik kondisi mati off dan butuh daya untuk tahan memory	volatile memory adalah memory yang data dapat tulis dan hapus tetapi hilang saat hilang power kondisi off atau mati lampu
Stopword Removal	volatile rupa memory data tulis hapus akan hilang tidak alir listrik kondisi mati off butuh daya tahan memory	volatile memory memory data tulis hapus hilang hilang power kondisi off mati lampu
Tokenizing	'volatile', 'rupa', 'memory', 'data', 'tulis', 'hapus', 'akan', 'hilang', 'tidak', 'alir', 'listrik'	'volatile', 'memory', 'memory', 'data', 'tulis', 'hapus', 'hilang', 'hilang', 'power', 'kondisi', 'off', 'mati', 'lampu'



	Student Answer	Reference Answer
	'kondisi', 'mati', 'off', 'butuh', 'daya', 'tahan', 'memory'	
Duplicate Removal	'volatile', 'hilang', 'rupa', 'tidak', 'off', 'akan', 'butuh', 'daya', 'memory', 'data', 'kondisi', 'tahan', 'hapus', 'tulis', 'alir', 'listrik', 'mati'	'volatile', 'hilang', 'off', 'power', 'memory', 'data', 'kondisi', 'lampu', 'hapus', 'tulis', 'mati'

### C. Reference Answer Word Expansion

Reference answer word expansion in this study is a process of adding word synonyms obtained from Indonesian thesaurus to reference answer word list that is extracted from pre-processing step. Fig. 2 shows expansion using the thesaurus. Each word in the reference answer list is checked if synonym(s) are in the thesaurus. If synonym(s) exist, then a list of word synonym(s) is added to the reference answer list. For example, a list of words ["tulis"], a synonym of "tulis" is "catat", then an expanded list of words ["tulis","catat"]. These synonyms of word expansion are used as an alternative word to enhance similarity between reference answers and student answers.

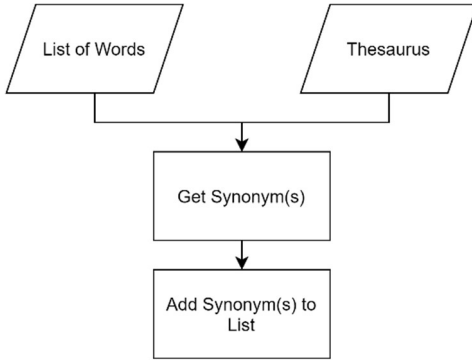


Fig. 2. Word Expansion using Thesaurus

### D. Calculate Similarity

String-based similarity methods used in this study to measure similarity between a set of terms in reference answer sentences ( $a_1$ ) and set of terms in student answer sentences ( $a_2$ ) are Cosine Coefficient (CC), Jaccard Coefficient (JC), and Dice Coefficient (DC) [9], [10]. Basically, the similarity between these two answers is provided by their intersection words. Note that we only use the thesaurus as alternate word. The number of words counted in this study are gained from the original reference answer ( $a_1$ ).

The Cosine Coefficient (CC) or Cosine Similarity is a method used to calculate the similarity between two objects using the cosine equation. The similarity between reference answers and student answers was calculated by (2) [15]; however, in this study, we used string-based similarity [10]. As an example from TABLE II. after duplicate removal, we have 17 words students answer, 11 words reference answer, and intersection between these two answers is 9 words. Similarity score for CC is  $9/(3.32 * 4.12) = 0.66$ .

$$score\_sim_{cc}(a_1, a_2) = |a_1 \cap a_2| / (|a_1|^{1/2} * |a_2|^{1/2}) \quad (2)$$

Jaccard Coefficient (JC) is a method used to calculate the similarity between two objects by counting the number of the same terms compared by the number of unique terms from two

strings [10][16]. JC equation can be seen in (3). For example, as in CC, JC similarity is  $9/(11+17-9) = 0.47$

$$score\_sim_{JC}(a_1, a_2) = |a_1 \cap a_2| / (|a_1| + |a_2| - |a_1 \cap a_2|) \quad (3)$$

The dice coefficient is a method for comparing two different text samples. The difference between this method and the Jaccard coefficient is that the dice coefficients did not count the number of unique terms unless counting all terms. The dice coefficient equation can be seen in (4). The dice coefficient is defined as twice the number of the same terms in the two terms being compared, divided by the total number of terms in both texts  $a_1$  and  $a_2$  [9], [10], [17]. For example, as in CC, DC similarity score is  $2*9/(11+17) = 0.64$

$$score\_sim_{DC}(a_1, a_2) = 2|a_1 \cap a_2| / (|a_1| + |a_2|) \quad (4)$$

### E. Keyword Matching

The keyword matching process is carried out to see the match between reference answers and student answers where keywords are obtained by taking unique words from preprocessing stage. The assessment in the keyword matching process is calculated based on the match between student answers against reference answers. This method only consider the intersection of two answers compared to the reference answer (5).

$$Score_{Matching}(a_1, a_2) = |a_1 \cap a_2| / |a_1| \quad (5)$$

As an example in TABLE II. after duplicate removal, there are 17 words students answer, and 11 words reference answer. Thus, the intersection between these two answers is 9 words. Keyword matching score is  $9/11 = 0.82$ . In Keyword Matching scoring, the student answers will be worth 0 if no words match the reference answer, and 1 if all the words in the reference answer are in the student's answer

### F. Calculate Final Score

The final score is obtained by multiplying similarity score and keyword matching score that ranges [0,1] by 100 (maximum score for each correct answer) to obtain a predicted score. The final score is calculated by averaging predicted scores from similarity and scores from keyword matching. The equation for final score can be seen in (6) or (7).

$$Finalscore_{sim} = 0.5((score_{sim} * 100) + (score_{matching} * 100)) \quad (6)$$

$$Finalscore_{sim} = 50(score_{sim} + score_{matching}) \quad (7)$$

For example, the final score for similarity using similarity (CC, JC, DC) and keyword matching will be:

$$Finalscore_{CC} = 50(0.66+0.82) = 74$$

$$Finalscore_{JC} = 50(0.47+0.82) = 64.5$$

$$Finalscore_{DC} = 50(0.64+0.82) = 73$$

### G. Performance Evaluation

System performance is evaluated by calculating the Mean Absolute Error (MAE) value which can be seen in (8) [17] that is error between the scores obtained by the scoring system and average scores given by three teachers.

$$MAE = \sum |X - Y| / n \quad (8)$$

Where X is the system’s scoring results, Y is the average of students’ score answers given by three teachers, and n is the total number of answers evaluated. In addition to MAE, performance evaluation is also carried out by looking for correlations. This correlation is used to find the level of agreement or suitability between student answer scores given by human evaluators and the scores obtained from the automated essay scoring system. The correlation value in this study uses the Pearson Correlation, which can be seen in (9). Correlation is defined as a comparison between covariance and multiplication of standard deviation of student scores given by teachers and scores generated by the system.

$$Corr(X, Y) = Covariance(X, Y) / (stdev(X) * stdev(Y)) \quad (9)$$

Corr is Pearson correlation value between score generated by system and score given by teacher and defined as comparison between covariance and stdev. Correlation range of values between 0 to 1. The correlation criteria to determine the system’s success is less if the correlation is < 0.4, good if the correlation is between 0.4 and 0.75, and very good if the correlation value is > 0.75 [21].

### III. EXPERIMENTAL RESULT

The experiment design in this study focuses on investigating performance improvement after reference answer word expansion. Mean Absolute Error (MAE) and correlation calculated for each question in categories. We want to achieve smaller MAE and higher correlation.

TABLE III. shows MAE for technology category for Final Score similarity using Cosine Coefficient (CC), Jaccard Coefficient (JC), and Dice Coefficient (DC). As we can see, there are improvement results by expanding reference answers. MAE shows in the table are for score in range [0, 100] the smaller MAE the better. Maximum MAE difference is 5.2931 in technology category is MAE for question 1 using JC similarity from 11.5863 to 6.2932. Overall most significant change is in question 4, also maximum MAE difference for CC and DC similarity. MAE for questions 7 and 8 did not change, indicating that for these 2 questions, reference answer synonym has no intersection with student answer.

TABLE III. MEAN ABSOLUTE ERROR (MAE) FOR TECHNOLOGY CATEGORY

Question	Technology			Technology Expanded Answer		
	CC	JC	DC	CC	JC	DC
1	10.4991	11.5863	10.4247	10.4422	6.2932	9.5391
2	10.5001	14.7365	11.5361	7.0955	11.0582	7.7226
3	11.0833	19.6427	12.6679	9.3890	18.0380	10.9860
4	18.8138	23.9216	18.9433	13.9849	18.8443	13.9084
5	6.5682	7.1544	5.9413	5.6737	5.3671	4.8077
6	11.1905	16.7713	11.3559	11.0613	16.6664	11.2359
7	5.0349	6.1462	4.8559	5.0349	6.1462	4.8559
8	13.7185	15.3055	13.4628	13.7185	15.3055	13.4628
9	12.5452	18.6742	13.5710	10.7519	16.8437	11.5515
10	13.7334	18.6620	14.4257	11.4652	16.2454	11.9690
Average	11.3687	15.2601	11.7185	9.8617	13.0808	10.0039

Table IV shows MAE for all question categories. Word expansion using synonyms increase scoring accuracy in all categories. However, the lifestyle category has the most significant changes when compared before and after using

synonyms. The difference for lifestyle category each successive similarity for CC, JC, and DC is 2.3108, 2.3527, and 2.3891. Smallest MAE for all category achieved by CC Final score, followed by DC and JC.

TABLE IV. MEAN ABSOLUTE ERROR (MAE) FOR ALL CATEGORIES

Category	Similarity	CC	JC	DC
Lifestyle	Base	11.8903	14.6270	12.3705
	Expanded	9.5794	12.2744	9.9814
Politic	Base	13.2602	16.7163	13.3771
	Expanded	11.9540	15.1047	11.9648
Technology	Base	11.3687	15.2601	11.7185
	Expanded	9.8617	13.0808	10.0039
Sport	Base	12.1473	16.6172	12.8292
	Expanded	10.8691	14.9220	11.4425

TABLE V. shows Pearson correlation between final score using similarity CC, DC, and JC against average score given by three teachers for technology category. The highest correlation achieved in question 7, by a score of more than 0.95, is a very good correlation. The highest improvement for CC final score lies in Question 2 from 0.2725 to 0.4064 or increase by 0.1339. Furthermore, JC and DC final score in Question 5 increases by 0.0968 and 0.0995 consecutively. Using word expansion, the average correlation in the technology category improved from a good correlation to a very good correlation for JC and DC final scores.

TABLE V. CORRELATION FOR TECHNOLOGY CATEGORY

Question	Technology			Technology Expanded Answer		
	CC	JC	DC	CC	JC	DC
1	0.6368	0.6982	0.6694	0.6969	0.7594	0.7392
2	0.2725	0.4859	0.4887	0.4064	0.5737	0.5771
3	0.7036	0.7710	0.7892	0.7405	0.7920	0.8121
4	0.5239	0.6364	0.6349	0.6214	0.7040	0.6958
5	0.5688	0.6611	0.6662	0.6803	0.7579	0.7656
6	0.9089	0.9152	0.9189	0.9118	0.9168	0.9214
7	0.9552	0.9509	0.9616	0.9552	0.9509	0.9616
8	0.7568	0.7230	0.7790	0.7568	0.7230	0.7790
9	0.5479	0.6309	0.6534	0.6073	0.6673	0.6949
10	0.6346	0.7019	0.7023	0.5456	0.6621	0.6547
Average	0.6509	0.7174	0.7264	0.6922	0.7507	0.7602

Correlation for all categories can be shown in TABLE VI. Without word expansion, very good correlation type only in Sport category using DC Final score. After expansion, we had 2 categories with a very good correlation in JC similarity and 4 (all) categories with very good correlation. Final score using CC Final score all lies in good category. The highest correlation for all questions category lies in DC Final score, followed by JC and CC both with and without word expansion.

TABLE VI. CORRELATION FOR ALL CATEGORY

Category	Similarity	CC	JC	DC
Lifestyle	Base	0.6533	0.7161	0.7212
	Expanded	0.7185	0.7694	0.7727
Politic	Base	0.7054	0.7158	0.7458
	Expanded	0.7214	0.7259	0.7543
Technology	Base	0.6509	0.7174	0.7264

	<i>Expanded</i>	0.6922	0.7507	0.7602
Sport	<i>Base</i>	0.7106	0.7332	0.7503
	<i>Expanded</i>	0.7159	0.7375	0.7550

#### IV. CONCLUSION

The Word expansion approach can work well to increase similarity in Indonesian short essay auto scoring, as indicated by increasing correlation and decreasing Mean Absolute Error (MAE) values. The highest correlation was achieved by the Dice Coefficient similarity method by very good correlation, and Smallest MAE was achieved by Cosine Coefficient similarity method.

However, MAE in this study is still high enough for a functional essay auto scoring system. MAE is relatively high, more than 9.5794 for a maximum score of 100. study in this field needed to improve performance. Further study is expected to process the dataset with a more varied question category in short answer that has reference answer.

#### REFERENCES

- [1] H. Rababah and A. T. Al-Taani, "An automated scoring approach for Arabic short answers essay questions," in *ICIT 2017 - 8th International Conference on Information Technology, Proceedings*, Oct. 2017, pp. 697–702. doi: 10.1109/ICITECH.2017.8079930.
- [2] F. Rahutomo *et al.*, "Open Problems in Indonesian Automatic Essay Scoring System," *International Journal of Engineering & Technology*, vol. 7, no. 4.44, p. 156, Dec. 2018, doi: 10.14419/ijet.v7i4.44.26974.
- [3] R. B. Aji, Z. A. Baisal, and Y. Firdaus, "Automatic Essay Grading System Menggunakan Metode Latent Semantic Analysis E-78 E-79," *Seminar Nasional Aplikasi Teknologi Informasi*, vol. 2011, no. Snati, pp. 1–9, 2011.
- [4] A. A. P. Ratna, B. Budiardjo, and D. Hartanto, "Simple: Sistem Penilai Esei Otomatis Untuk Menilai Ujian Dalam Bahasa Indonesia," *MAKARA of Technology Series*, vol. 11, no. 1, Oct. 2010, doi: 10.7454/mst.v11i1.435.
- [5] A. Agung and P. Ratna, "SIMPLE-O, the Essay Grading System for Indonesian Language Using LSA Method with Multi-Level Keywords," Oct. 2015. Accessed: Apr. 08, 2021. [Online]. Available: [www.iafor.org](http://www.iafor.org)
- [6] A. Amalia, D. Gunawan, Y. Fithri, and I. Aulia, "Automated Bahasa Indonesia essay evaluation with latent semantic analysis," in *Journal of Physics: Conference Series*, Jul. 2019, vol. 1235, no. 1, p. 12100. doi: 10.1088/1742-6596/1235/1/012100.
- [7] J. Zeniarja, A. Salam, and I. Achsanu, "Sistem Koreksi Jawaban Esai Otomatis (E-Valuation) dengan Vector Space Model pada Computer Based Test (CBT)," *Seri Prosiding Seminar Nasional Dinamika Informatika*, vol. 4, no. 1, Apr. 2020.
- [8] T. Ajitono and Y. Widyani, "Indonesian essay grading module using Natural Language Processing," May 2017. doi: 10.1109/ICODSE.2016.7936117.

- [9] U. Hasanah, A. E. Permasari, S. S. Kusumawardani, and F. S. Pribadi, "A scoring rubric for automatic short answer grading system," *Telkomnika (Telecommunication Computing Electronics and Control)*, vol. 17, no. 2, pp. 763–770, Apr. 2019, doi: 10.12928/TELKOMNIKA.V17I2.11785.
- [10] T. wahyuningsih, H. Henderi, and W. Winarno, "Text Mining an Automatic Short Answer Grading (ASAG), Comparison of Three Methods of Cosine Similarity, Jaccard Similarity and Dice's Coefficient," *Journal of Applied Data Sciences*, vol. 2, no. 2, pp. 45–54, May 2021, doi: 10.47738/JADS.V2I2.31.
- [11] F. Rahutomo, Y. P. Putra, and M. H. Ali, "Implementasi Manhattan Distance dan Dice Similarity pada Ujian Esai Daring Berbahasa Indonesia," *Seminar Informatika Aplikatif Polinema*, pp. 171–174, 2019.
- [12] M. Jamaluddin, N. Yuniarti, A. Rahmani, and J. Hutahaean, "Aplikasi Penilaian Otomatis Ujian Esai Berbahasa Indonesia Menggunakan Algoritma K-Nearest Neighbor ( Studi kasus MAN Cimahi )," *Prosiding Industrial Research Workshop and National Seminar*, vol. 10, no. August 2019, pp. 314–324, Aug. 2020, doi: 10.35313/irwns.v10i1.1404.
- [13] Q. Liu, H. Huang, J. Lu, Y. Gao, and G. Zhang, "Enhanced word embedding similarity measures using fuzzy rules for query expansion," *IEEE International Conference on Fuzzy Systems*, Aug. 2017, doi: 10.1109/FUZZ-IEEE.2017.8015482.
- [14] M. F. Z. Rounaqi, "Query answering system of Shahih Hadith Muttafaqun 'Alaih using Indonesian Thesaurus based on query expansion and naïve bayes classifier," Nov. 2019.
- [15] N. A. Rahman, Z. A. Bakar, and T. M. T. Sembok, "Query expansion using thesaurus in improving Malay Hadith retrieval system," *Proceedings 2010 International Symposium on Information Technology - System Development and Application and Knowledge Society, ITSIM'10*, vol. 3, pp. 1404–1409, 2010, doi: 10.1109/ITSIM.2010.5561518.
- [16] T. Roshinta, F. R.-P. S. (Seminar, and undefined 2016, "Analisis Aspek-Aspek Ujian Esai Daring Berbahasa Indonesia," *proceeding.sentrinov.org*, Accessed: Aug. 21, 2020. [Online]. Available: <http://proceeding.sentrinov.org/index.php/sentrinov/article/view/159>
- [17] M. Nazief, B. A. A. & Adriani, "Confix- stripping: Approach to Stemming Algorithm for Bahasa Indonesia," *Conferences in Research and Practice in Information Technology Series*, vol. 38, no. 4, 2005.
- [18] D. Gunawan, C. A. Sembiring, and M. A. Budiman, "The Implementation of Cosine Similarity to Calculate Text Relevance between Two Documents," *Journal of Physics: Conference Series*, vol. 978, no. 1, p. 012120, Mar. 2018, doi: 10.1088/1742-6596/978/1/012120.
- [19] W. H.Gomaa and A. A. Fahmy, "A Survey of Text Similarity Approaches," *International Journal of Computer Applications*, vol. 68, no. 13, 2013, doi: 10.5120/11638-7118.
- [20] L. R. Dice, "Measures of the Amount of Ecologic Association Between Species," *Ecology*, vol. 26, no. 3, 1945, doi: 10.2307/1932409.
- [21] T. F. de C. Marshall and J. L. Fleiss, "Statistical Methods for Rates and Proportions.," *The Statistician*, vol. 25, no. 1, p. 70, 1976, doi: 10.2307/2988144.

PAPER NAME

**IEEE word expansion.pdf**

---

WORD COUNT

**4236 Words**

CHARACTER COUNT

**22620 Characters**

PAGE COUNT

**5 Pages**

FILE SIZE

**317.2KB**

SUBMISSION DATE

**Feb 6, 2023 10:41 AM GMT+7**

REPORT DATE

**Feb 6, 2023 10:42 AM GMT+7**

---

**● 10% Overall Similarity**

The combined total of all matches, including overlapping sources, for each database.

- 8% Internet database
- 5% Publications database
- Crossref database
- Crossref Posted Content database
- 3% Submitted Works database

**● Excluded from Similarity Report**

- Manually excluded sources
- Manually excluded text blocks

# Word Expansion using Synonyms in Indonesian Short Essay Auto Scoring

1<sup>st</sup> Nurul Chamidah  
Faculty of Computer Science  
Universitas Pembangunan Nasional  
Veteran Jakarta  
Jakarta, Indonesia  
nurul.chamidah@upnvj.ac.id

2<sup>nd</sup> Mayanda Mega Santoni  
Faculty of Computer Science  
Universitas Pembangunan Nasional  
Veteran Jakarta  
Jakarta, Indonesia  
megasantoni@upnvj.ac.id

3<sup>rd</sup> Helena Nurramdhani Irmanda  
Faculty of Computer Science  
Universitas Pembangunan Nasional  
Veteran Jakarta  
Jakarta, Indonesia  
helenairmanda@upnvj.ac.id

4<sup>th</sup> Ria Astriratma  
Faculty of Computer Science  
Universitas Pembangunan Nasional  
Veteran Jakarta  
Jakarta, Indonesia  
astriratma@upnvj.ac.id

5<sup>th</sup> Lomo Mula Tua  
Faculty of Computer Science  
Universitas Pembangunan Nasional  
Veteran Jakarta  
Jakarta, Indonesia  
lomomt@upnvj.ac.id

6<sup>th</sup> Trihastuti Yuniati  
Fakultas Informatika  
Institut Teknologi Telkom Purwokerto  
Banyumas, Indonesia  
trihastuti@ittelkom-pwt.ac.id

**Abstract**— Exams conducted in online learning to evaluate learning processes have many formats, including essay format. Essays are considered more proper to measure learning activity results. However, essays require longer to assess student answers and have consistency problems if the assessment is carried out by different teachers or done separately. This study investigates the influence of word expansion using synonyms in Indonesian thesaurus on short essay auto scoring. The first step, reference answers and student answer text data is preprocessed by case folding, stemming, stop word removal, tokenizing, and duplicate word removal. Second, Word expansion using synonyms in thesaurus is used to generate alternate words for reference answers. Third step, the scoring process by calculating similarity and matching words. The score from the similarity and matching results is then used to generate the final score. Performance evaluation shows that the Dice Coefficient similarity method achieved the highest correlation by a very good correlation, and the smallest MAE was achieved by the Cosine Coefficient similarity method.

**Keywords**—essay auto scoring, word expansion, synonym, thesaurus

## I. INTRODUCTION

Online learning or e-learning is currently applied in learning activities to deliver learning materials, assignments, and exams. Exams conducted to evaluate learning processes have many formats in online learning. Questions format commonly used to assess a lesson generally consists of two general formats, objective questions, and essay questions. Objective questions have answer choices that students can choose, such as multiple choice answers, matching answers, and true-false answers. Meanwhile, essay questions do not have answer choices. Students need to write their sentences to answer this question format. For example, write a free essay that does not use an answer key, and usually, teachers need to pay more attention to its grammar. There is also an essay question model that asks students to explain or describe something where the explanation has reference answers as the key answers.

Essay questions are considered more useful to estimate the depth of knowledge received by students from teaching [1] than objective questions that are easy to apply but difficult to measure the level of understanding. Although essays are considered more appropriate to measure the results of learning activities, this form of question requires a longer time to assess answers than evaluation of objective questions. Another problem assessing essay questions is the problem of

consistency in both the same and different evaluators. Evaluation of essay questions by one person, inconsistency can occur if the review is carried out separately. Moreover, if other teachers carry out the assessment, they can get different scores on the same answer. Based on this explanation, it is necessary to create an auto scoring system to automatically assess essays to be more consistent.

Studies on automatic essay scoring in Indonesian have been done before. However, according to [2], there is not yet the most suitable method to use because automatic scoring system must provide an answer score as close as possible to the score given by human evaluators. The other problems, the resources for Indonesian are not as many as the resources in English. Studies [3]–[6] uses Latent Semantic Analysis (LSA) which maps keywords from student answers with keywords from reference answers into a matrix. Another study uses the Vector Space Model technique by word vectorizing using TF-IDF (Term Frequency-Inverse Document Frequency). It calculates cosine similarity between student answers and reference answers by taking keywords from these answers [7]. Study [8] utilizes lexical features in Natural Language Processing (NLP) by finding synonyms of words and then comparing between reference answers and student answers.

Scoring techniques for automatic essay scoring are also very diverse. In general, the assessment technique calculates closeness or similarity between the reference answer and student answer. The scoring method based on the similarity of keywords in a study [9] compares the scoring technique with the Longest Common Subsequence (LCS), Cosine Coefficient (CC), Jaccard Coefficient (JC), and Dice Coefficient (DC) in Indonesian short essays, also [10] comparing the last three methods. Likewise, some studies compare Cosine Similarity, Euclidean Distance, and Jaccard Coefficient [11]. Research [12] used K-Nearest Neighbour (KNN) to calculate the closeness between reference and student answers. Manhattan distance and dice similarity were used in the study [11] to calculate similarity answers and reference answers.

Word expansion can improve accuracy in text-based classification [13]. Word expansion using Indonesian thesaurus in the question answering system also shows better results than without using the query expansion [14]. Query expansion using Malay thesaurus also improve retrieval effectiveness [15].

This study aims to investigate the influence of word expansion using synonyms in Indonesian thesaurus to short



essay auto scoring. This expansion applied to reference answers as alternative words to enrich terms. The enriching terms are carried out to increase the chance of similarity between reference answers and student answers.

## II. METHODOLOGY

Fig.1 shows the method used in this study. The dataset contains text and numeric data types. Text data types consist of reference answers and student answers, and numeric data types consist of three scores for each student answer given by teachers. Preprocessing was conducted to reference answers and student answers. Word expansion using synonyms from Indonesian thesaurus is undertaken to expand preprocessed reference answers. The next step is calculating the similarity score and keyword matching score to obtain the final score. Finally, this study carries out performance evaluation to measure agreement between score given by teacher and score generated by the system.

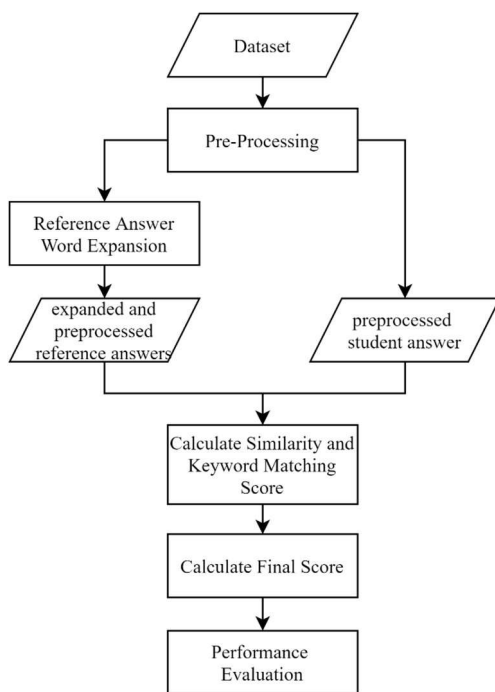


Fig. 1. Methodology

### A. Dataset

The dataset used in this study consisted of 40 questions and reference's answer texts for related questions and 2162 answers obtained and used in previous studies [2], [16]. These 40 questions are divided into four categories they are politics, lifestyle, sport, and technology. The final numeric score for each student's answer is in the range [0, 100] that three teachers give. The data sample can be seen in TABLE I.

TABLE I. DATA SAMPLE

Feature	Value
Question	Apa yang dimaksud dengan volatile memory?
Reference Answer	Volatile memory adalah memory yang datanya dapat ditulis dan dihapus, tetapi hilang saat kehilangan power kondisi off atau mati lampu).
Student Answer	volatile merupakan memory yang datanya dapat ditulis serta dihapus, tetapi akan hilang jika tidak ada aliran

Feature	Value
	listrik (kondisi mati/off) dan membutuhkan daya untuk mempertahankan memory.
Score 1	88
Score 2	100
Score 3	90

### B. Preprocessing

Text preprocessing is done on student's answers and reference's answers. This process consists of several steps. They are case folding, stemming, stop word removing, tokenizing, and duplicate word removal. TABLE II. shows preprocessing from students answer and reference answer from TABLE I. Preprocessing stage which will be explained as follows:

- Case folding is a process to convert all characters into lowercase letters. This process includes removing all character's non-alphabet and punctuation. For example, the word "Volatile" became "volatile".
- Stemming is a technique that converts the word into root words. It removes prefixes, suffixes, and affixes. Sastrawi library based on Nazief-Adriani algorithm [17] is used to conduct this process. For example, words "datanya", "ditulis", "dihapus", etc. After stemming process, words became root words "data", "tulis", "hapus", etc.
- Stop word removing is used to remove words that have no meaning and usually have high occurrences. In this study, Sastrawi library stop word list is used to remove stop words. For example, words "yang", "dapat", "tetapi", "dan", "untuk" were removed from sentences.
- Tokenizing is a process to separate words from the text. Indonesian text separating words by using space characters.
- Duplicate Word Removal is a process to remove duplicate words. For example, word "volatile" and "hilang" has two occurrences in reference answers.

TABLE II. PREPROCESSING

	Student Answer	Reference Answer
Case folding	volatile merupakan memory yang datanya dapat ditulis serta dihapus tetapi akan hilang jika tidak ada aliran listrik kondisi mati off dan membutuhkan daya untuk mempertahankan memory	volatile memory adalah memory yang datanya dapat ditulis dan dihapus tetapi hilang saat kehilangan power kondisi off atau mati lampu
Stemming	volatile rupa memory yang data dapat tulis serta hapus tetapi akan hilang jika tidak ada alir listrik kondisi mati off dan butuh daya untuk tahan memory	volatile memory adalah memory yang data dapat tulis dan hapus tetapi hilang saat hilang power kondisi off atau mati lampu
Stopword Removal	volatile rupa memory data tulis hapus akan hilang tidak alir listrik kondisi mati off butuh daya tahan memory	volatile memory memory data tulis hapus hilang hilang power kondisi off mati lampu
Tokenizing	'volatile', 'rupa', 'memory', 'data', 'tulis', 'hapus', 'akan', 'hilang', 'tidak', 'alir', 'listrik',	'volatile', 'memory', 'memory', 'data', 'tulis', 'hapus', 'hilang', 'hilang', 'power', 'kondisi', 'off', 'mati', 'lampu'

	Student Answer	Reference Answer
	'kondisi', 'mati', 'off', 'butuh', 'daya', 'tahan', 'memory'	
Duplicate Removal	'volatile', 'hilang', 'rupa', 'tidak', 'off', 'akan', 'butuh', 'daya', 'memory', 'data', 'kondisi', 'tahan', 'hapus', 'tulis', 'alir', 'listrik', 'mati'	'volatile', 'hilang', 'off', 'power', 'memory', 'data', 'kondisi', 'lampu', 'hapus', 'tulis', 'mati'

### C. Reference Answer Word Expansion

Reference answer word expansion in this study is a process of adding word synonyms obtained from Indonesian thesaurus to reference answer word list that is extracted from pre-processing step. Fig. 2 shows expansion using the thesaurus. Each word in the reference answer list is checked if synonym(s) are in the thesaurus. If synonym(s) exist, then a list of word synonym(s) is added to the reference answer list. For example, a list of words ["tulis"], a synonym of "tulis" is "catat", then an expanded list of words ["tulis","catat"]. These synonyms of word expansion are used as an alternative word to enhance similarity between reference answers and student answers.

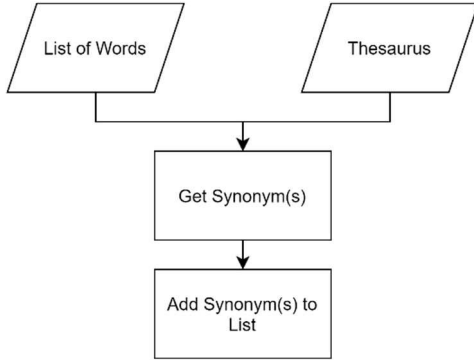


Fig. 2. Word Expansion using Thesaurus

### D. Calculate Similarity

String-based similarity methods used in this study to measure similarity between a set of terms in reference answer sentences ( $a_1$ ) and set of terms in student answer sentences ( $a_2$ ) are Cosine Coefficient (CC), Jaccard Coefficient (JC), and Dice Coefficient (DC) [9], [10]. Basically, the similarity between these two answers is provided by their intersection words. Note that we only use the thesaurus as alternate word. The number of words counted in this study are gained from the original reference answer ( $a_1$ ).

The Cosine Coefficient (CC) or Cosine Similarity is a method used to calculate the similarity between two objects using the cosine equation. The similarity between reference answers and student answers was calculated by (2) [15]; however, in this study, we used string-based similarity [10]. As an example from TABLE II. after duplicate removal, we have 17 words students answer, 11 words reference answer, and intersection between these two answers is 9 words. Similarity score for CC is  $9/(3.32 * 4.12) = 0.66$ .

$$score\_sim_{CC}(a_1, a_2) = |a_1 \cap a_2| / (|a_1|^{1/2} * |a_2|^{1/2}) \quad (2)$$

Jaccard Coefficient (JC) is a method used to calculate the similarity between two objects by counting the number of the same terms compared by the number of unique terms from two

strings [10][16]. JC equation can be seen in (3). For example, as in CC, JC similarity is  $9/(11+17-9) = 0.47$

$$score\_sim_{JC}(a_1, a_2) = |a_1 \cap a_2| / (|a_1| + |a_2| - |a_1 \cap a_2|) \quad (3)$$

The dice coefficient is a method for comparing two different text samples. The difference between this method and the Jaccard coefficient is that the dice coefficients did not count the number of unique terms unless counting the terms. The dice coefficient equation can be seen in (4). The dice coefficient is defined as twice the number of the same terms in the two terms being compared, divided by the total number of terms in both texts  $a_1$  and  $a_2$  [9], [10], [17]. For example, as in CC, DC similarity score is  $2*9/(11+17) = 0.64$

$$score\_sim_{DC}(a_1, a_2) = 2|a_1 \cap a_2| / (|a_1| + |a_2|) \quad (4)$$

### E. Keyword Matching

The keyword matching process is carried out to see the match between reference answers and student answers where keywords are obtained by taking unique words from preprocessing stage. The assessment in the keyword matching process is calculated based on the match between student answers against reference answers. This method only consider the intersection of two answers compared to the reference answer (5).

$$Score_{Matching}(a_1, a_2) = |a_1 \cap a_2| / |a_1| \quad (5)$$

As an example in TABLE II. after duplicate removal, there are 17 words students answer, and 11 words reference answer. Thus, the intersection between these two answers is 9 words. Keyword matching score is  $9/11 = 0.82$ . In Keyword Matching scoring, the student answers will be worth 0 if no words match the reference answer, and 1 if all the words in the reference answer are in the student's answer

### F. Calculate Final Score

The final score is obtained by multiplying similarity score and keyword matching score that ranges [0,1] by 100 (maximum score for each correct answer) to obtain a predicted score. The final score is calculated by averaging predicted scores from similarity and scores from keyword matching. The equation for final score can be seen in (6) or (7).

$$Finalscore_{sim} = 0.5((score_{sim} * 100) + (score_{matching} * 100)) \quad (6)$$

$$Finalscore_{sim} = 50(score_{sim} + score_{matching}) \quad (7)$$

For example, the final score for similarity using similarity (CC, JC, DC) and keyword matching will be:

$$Finalscore_{CC} = 50(0.66 + 0.82) = 74$$

$$Finalscore_{JC} = 50(0.47 + 0.82) = 64.5$$

$$Finalscore_{DC} = 50(0.64 + 0.82) = 73$$

### G. Performance Evaluation

System performance is evaluated by calculating the Mean Absolute Error (MAE) value which can be seen in (8) [17] that is error between the scores obtained by the scoring system and average scores given by three teachers.

$$MAE = \sum |X - Y| / n \quad (8)$$



Where X is the system's scoring results, Y is the average of students' score answers given by three teachers, and n is the total number of answers evaluated. In addition to MAE, performance evaluation is also carried out by looking for correlations. This correlation is used to find the level of agreement or suitability between student answer scores given by human evaluators and the scores obtained from the automated essay scoring system. The correlation value in this study uses the Pearson Correlation, which can be seen in (9). Correlation is defined as a comparison between covariance and multiplication of standard deviation of student scores given by teachers and scores generated by the system.

$$Corr(X,Y) = Covariance(X,Y)/(stdev(X)*stdev(Y)) \quad (9)$$

Corr is Pearson correlation value between score generated by system and score given by teacher and defined as comparison between covariance and *stdev*. Correlation range of values between 0 to 1. The correlation criteria to determine the system's success is less if the correlation is < 0.4, good if the correlation is between 0.4 and 0.75, and very good if the correlation value is > 0.75 [21].

### III. EXPERIMENTAL RESULT

The experiment design in this study focuses on investigating performance improvement after reference answer word expansion. Mean Absolute Error (MAE) and correlation calculated for each question in categories. We want to achieve smaller MAE and higher correlation.

TABLE III. shows MAE for technology category for Final Score similarity using Cosine Coefficient (CC), Jaccard Coefficient (JC), and Dice Coefficient (DC). As we can see, there are improvement results by expanding reference answers. MAE shows in the table are for score in range [0, 100] the smaller MAE the better. Maximum MAE difference is 5.2931 in technology category is MAE for question 1 using JC similarity from 11.5863 to 6.2932. Overall most significant change is in question 4, also maximum MAE difference for CC and DC similarity. MAE for questions 7 and 8 did not change, indicating that for these 2 questions, reference answer synonym has no intersection with student answer.

TABLE III. MEAN ABSOLUTE ERROR (MAE) FOR TECHNOLOGY CATEGORY

Question	Technology			Technology Expanded Answer		
	CC	JC	DC	CC	JC	DC
1	10.4991	11.5863	10.4247	10.4422	6.2932	9.5391
2	10.5001	14.7365	11.5361	7.0955	11.0582	7.7226
3	11.0833	19.6427	12.6679	9.3890	18.0380	10.9860
4	18.8138	23.9216	18.9433	13.9849	18.8443	13.9084
5	6.5682	7.1544	5.9413	5.6737	5.3671	4.8077
6	11.1905	16.7713	11.3559	11.0613	16.6664	11.2359
7	5.0349	6.1462	4.8559	5.0349	6.1462	4.8559
8	13.7185	15.3055	13.4628	13.7185	15.3055	13.4628
9	12.5452	18.6742	13.5710	10.7519	16.8437	11.5515
10	13.7334	18.6620	14.4257	11.4652	16.2454	11.9690
Average	11.3687	15.2601	11.7185	9.8617	13.0808	10.0039

Table IV shows MAE for all question categories. Word expansion using synonyms increase scoring accuracy in all categories. However, the lifestyle category has the most significant changes when compared before and after using

synonyms. The difference for lifestyle category each successive similarity for CC, JC, and DC is 2.3108, 2.3527, and 2.3891. Smallest MAE for all category achieved by CC Final score, followed by DC and JC.

TABLE IV. MEAN ABSOLUTE ERROR (MAE) FOR ALL CATEGORIES

Category	Similarity	CC	JC	DC
Lifestyle	Base	11.8903	14.6270	12.3705
	Expanded	9.5794	12.2744	9.9814
Politic	Base	13.2602	16.7163	13.3771
	Expanded	11.9540	15.1047	11.9648
Technology	Base	11.3687	15.2601	11.7185
	Expanded	9.8617	13.0808	10.0039
Sport	Base	12.1473	16.6172	12.8292
	Expanded	10.8691	14.9220	11.4425

TABLE V. shows Pearson correlation between final score using similarity CC, DC, and JC against average score given by three teachers for technology category. The highest correlation achieved in question 7, by a score of more than 0.95, is a very good correlation. The highest improvement for CC final score lies in Question 2 from 0.2725 to 0.4064 or increase by 0.1339. Furthermore, JC and DC final score in Question 5 increases by 0.0968 and 0.0995 consecutively. Using word expansion, the average correlation in the technology category improved from a good correlation to a very good correlation for JC and DC final scores.

TABLE V. CORRELATION FOR TECHNOLOGY CATEGORY

Question	Technology			Technology Expanded Answer		
	CC	JC	DC	CC	JC	DC
1	0.6368	0.6982	0.6694	0.6969	0.7594	0.7392
2	0.2725	0.4859	0.4887	0.4064	0.5737	0.5771
3	0.7036	0.7710	0.7892	0.7405	0.7920	0.8121
4	0.5239	0.6364	0.6349	0.6214	0.7040	0.6958
5	0.5688	0.6611	0.6662	0.6803	0.7579	0.7656
6	0.9089	0.9152	0.9189	0.9118	0.9168	0.9214
7	0.9552	0.9509	0.9616	0.9552	0.9509	0.9616
8	0.7568	0.7230	0.7790	0.7568	0.7230	0.7790
9	0.5479	0.6309	0.6534	0.6073	0.6673	0.6949
10	0.6346	0.7019	0.7023	0.5456	0.6621	0.6547
Average	0.6509	0.7174	0.7264	0.6922	0.7507	0.7602

Correlation for all categories can be shown in TABLE VI. Without word expansion, very good correlation type only in Sport category using DC Final score. After expansion, we had 2 categories with a very good correlation in JC similarity and 4 (all) categories with very good correlation. Final score using CC Final score all lies in good category. The highest correlation for all questions category lies in DC Final score, followed by JC and CC both with and without word expansion.

TABLE VI. CORRELATION FOR ALL CATEGORY

Category	Similarity	CC	JC	DC
Lifestyle	Base	0.6533	0.7161	0.7212
	Expanded	0.7185	0.7694	0.7727
Politic	Base	0.7054	0.7158	0.7458
	Expanded	0.7214	0.7259	0.7543
Technology	Base	0.6509	0.7174	0.7264

	<i>Expanded</i>	0.6922	0.7507	0.7602
Sport	<i>Base</i>	0.7106	0.7332	0.7503
	<i>Expanded</i>	0.7159	0.7375	0.7550

#### IV. CONCLUSION

The Word expansion approach can work well to increase similarity in Indonesian short essay auto scoring, as indicated by increasing correlation and decreasing Mean Absolute Error (MAE) values. The highest correlation was achieved by the Dice Coefficient similarity method by very good correlation, and Smallest MAE was achieved by Cosine Coefficient similarity method.

However, MAE in this study is still high enough for a functional essay auto scoring system. MAE is relatively high, more than 9.5794 for a maximum score of 100. study in this field needed to improve performance. Further study is expected to process the dataset with a more varied question category in short answer that has reference answer.

#### REFERENCES

- [1] H. Rababah and A. T. Al-Taani, "An automated scoring approach for Arabic short answers essay questions," in *ICIT 2017 - 8th International Conference on Information Technology, Proceedings*, Oct. 2017, pp. 697–702. doi: 10.1109/ICITECH.2017.8079930.
- [2] F. Rahutomo *et al.*, "Open Problems in Indonesian Automatic Essay Scoring System," *International Journal of Engineering & Technology*, vol. 7, no. 4.44, p. 156, Dec. 2018, doi: 10.14419/ijet.v7i4.44.26974.
- [3] R. B. Aji, Z. A. Baisal, and Y. Firdaus, "Automatic Essay Grading System Menggunakan Metode Latent Semantic Analysis E-78 E-79," *Seminar Nasional Aplikasi Teknologi Informasi*, vol. 2011, no. Snati, pp. 1–9, 2011.
- [4] A. A. P. Ratna, B. Budiardjo, and D. Hartanto, "Simple: Sistem Penilai Esei Otomatis Untuk Menilai Ujian Dalam Bahasa Indonesia," *MAKARA of Technology Series*, vol. 11, no. 1, Oct. 2010, doi: 10.7454/mst.v11i1.435.
- [5] A. Agung and P. Ratna, "SIMPLE-O, the Essay Grading System for Indonesian Language Using LSA Method with Multi-Level Keywords," Oct. 2015. Accessed: Apr. 08, 2021. [Online]. Available: [www.iafor.org](http://www.iafor.org)
- [6] A. Amalia, D. Gunawan, Y. Fithri, and I. Aulia, "Automated Bahasa Indonesia essay evaluation with latent semantic analysis," in *Journal of Physics: Conference Series*, Jul. 2019, vol. 1235, no. 1, p. 12100. doi: 10.1088/1742-6596/1235/1/012100.
- [7] J. Zeniarja, A. Salam, and I. Achsanu, "Sistem Koreksi Jawaban Esai Otomatis (E-Valuation) dengan Vector Space Model pada Computer Based Test (CBT)," *Seri Prosiding Seminar Nasional Dinamika Informatika*, vol. 4, no. 1, Apr. 2020.
- [8] T. Ajitono and Y. Widyani, "Indonesian essay grading module using Natural Language Processing," May 2017. doi: 10.1109/ICODSE.2016.7936117.

- [9] U. Hasanah, A. E. Permanasari, S. S. Kusumawardani, and F. S. Pribadi, "A scoring rubric for automatic short answer grading system," *Telkomnika (Telecommunication Computing Electronics and Control)*, vol. 17, no. 2, pp. 763–770, Apr. 2019, doi: 10.12928/TELKOMNIKA.V17I2.11785.
- [10] T. wahyuningsih, H. Henderi, and W. Winarno, "Text Mining an Automatic Short Answer Grading (ASAG), Comparison of Three Methods of Cosine Similarity, Jaccard Similarity and Dice's Coefficient," *Journal of Applied Data Sciences*, vol. 2, no. 2, pp. 45–54, May 2021, doi: 10.47738/JADS.V2I2.31.
- [11] F. Rahutomo, Y. P. Putra, and M. H. Ali, "Implementasi Manhattan Distance dan Dice Similarity pada Ujian Esai Daring Berbahasa Indonesia," *Seminar Informatika Aplikatif Polinema*, pp. 171–174, 2019.
- [12] M. Jamaluddin, N. Yuniarti, A. Rahmani, and J. Hutahaean, "Aplikasi Penilaian Otomatis Ujian Esai Berbahasa Indonesia Menggunakan Algoritma K-Nearest Neighbor ( Studi kasus MAN Cimahi )," *Prosiding Industrial Research Workshop and National Seminar*, vol. 10, no. August 2019, pp. 314–324, Aug. 2020, doi: 10.35313/irwns.v10i1.1404.
- [13] Q. Liu, H. Huang, J. Lu, Y. Gao, and G. Zhang, "Enhanced word embedding similarity measures using fuzzy rules for query expansion," *IEEE International Conference on Fuzzy Systems*, Aug. 2017, doi: 10.1109/FUZZ-IEEE.2017.8015482.
- [14] M. F. Z. Rounaqi, "Query answering system of Shahih Hadith Muttafaqun 'Alaih using Indonesian Thesaurus based on query expansion and naïve bayes classifier," Nov. 2019.
- [15] N. A. Rahman, Z. A. Bakar, and T. M. T. Sembok, "Query expansion using thesaurus in improving Malay Hadith retrieval system," *Proceedings 2010 International Symposium on Information Technology - System Development and Application and Knowledge Society, ITSIM'10*, vol. 3, pp. 1404–1409, 2010, doi: 10.1109/ITSIM.2010.5561518.
- [16] T. Roshinta, F. R.-P. S. (Seminar, and undefined 2016, "Analisis Aspek-Aspek Ujian Esai Daring Berbahasa Indonesia," *proceeding.sentrinov.org*. Accessed: Aug. 21, 2020. [Online]. Available: <http://proceeding.sentrinov.org/index.php/sentrinov/article/view/159>
- [17] M. Nazief, B. A. A. & Adriani, "Confix- stripping: Approach to Stemming Algorithm for Bahasa Indonesia," *Conferences in Research and Practice in Information Technology Series*, vol. 38, no. 4, 2005.
- [18] D. Gunawan, C. A. Sembiring, and M. A. Budiman, "The Implementation of Cosine Similarity to Calculate Text Relevance between Two Documents," *Journal of Physics: Conference Series*, vol. 978, no. 1, p. 012120, Mar. 2018, doi: 10.1088/1742-6596/978/1/012120.
- [19] W. H.Gomaa and A. A. Fahmy, "A Survey of Text Similarity Approaches," *International Journal of Computer Applications*, vol. 68, no. 13, 2013, doi: 10.5120/11638-7118.
- [20] L. R. Dice, "Measures of the Amount of Ecologic Association Between Species," *Ecology*, vol. 26, no. 3, 1945, doi: 10.2307/1932409.
- [21] T. F. de C. Marshall and J. L. Fleiss, "Statistical Methods for Rates and Proportions.," *The Statistician*, vol. 25, no. 1, p. 70, 1976, doi: 10.2307/2988144.

● **10% Overall Similarity**

Top sources found in the following databases:

- 8% Internet database
- 5% Publications database
- Crossref database
- Crossref Posted Content database
- 3% Submitted Works database

TOP SOURCES

The sources with the highest number of matches within the submission. Overlapping sources will not be displayed.

1	<b>core.ac.uk</b> Internet	2%
2	<b>ilkom-sidik.blogspot.com</b> Internet	2%
3	<b>Jožef Stefan International Postgraduate School on 2017-11-13</b> Submitted works	<1%
4	<b>"Table of Content", 2021 International Conference on Informatics, Multi...</b> Crossref	<1%
5	<b>muhammadreihanunibi.wordpress.com</b> Internet	<1%
6	<b>Gunawansyah, Riska Rahayu, Nurwathi, Bambang Sugiarto, Gunawan. ...</b> Crossref	<1%
7	<b>Ar-Razy Muhammad, Adhistya Erna Permanasari, Indriana Hidayah. "En...</b> Crossref	<1%
8	<b>Emirates International School on 2022-11-22</b> Submitted works	<1%

9	<b>python.hotexamples.com</b>	Internet	<1%
10	<b>B. Yu, Z. Z. Yang, J. Wang. "Bus travel-time prediction based on bus sp...</b>	Crossref	<1%
11	<b>Faisal Rahutomo, Trisna Ari Roshinta, Erfan Rohadi, Indrazno Siradjudd...</b>	Crossref	<1%
12	<b>Uswatun Hasanah, Bambang Pilu Hartato. "Assessing Short Answers i...</b>	Crossref	<1%
13	<b>faculty.utrgv.edu</b>	Internet	<1%
14	<b>ijiis.org</b>	Internet	<1%
15	<b>journals.telkomuniversity.ac.id</b>	Internet	<1%
16	<b>Feddy Setio Pribadi, Teguh Bharata Adji, Adhistya Erna Permanasari, T...</b>	Crossref	<1%
17	<b>Amanda Nur Oktaviani, Marwah Zulfanny Alief, Lea Santiar, Prima Dewi...</b>	Crossref	<1%
18	<b>Pongsakorn Saipech, Pusadee Seresangtakul. "Automatic Thai Subject...</b>	Crossref	<1%
19	<b>connect.appypie.com</b>	Internet	<1%
20	<b>etheses.uin-malang.ac.id</b>	Internet	<1%

21	<b>jru.edu.in</b> Internet	<1%
22	<b>pure.ed.ac.uk</b> Internet	<1%
23	<b>University of Limerick on 2021-08-10</b> Submitted works	<1%

● **Excluded from Similarity Report**

- Manually excluded sources
- Manually excluded text blocks

EXCLUDED SOURCES

**Nurul Chamidah, Mayanda Mega Santoni, Helena Nurramdhani Irmada, Ria A...** 80%  
 Crossref

EXCLUDED TEXT BLOCKS

**Word Expansion using Synonyms in Indonesian Short Essay Auto Scoring**

"Table of Content", 2021 International Conference on Informatics, Multimedia, Cyber and Information Syste...

**Helena Nurramdhani Irmada Faculty of Computer Science Universitas Pembangun...**

Widya Cholil, Lalilatul Rahmi, Anita Muliawati, Jayanta, Rio Wirawan, Helena Nurramdhani Irmada. "Public ...

**Faculty of Computer Science Universitas Pembangunan Nasional Veteran Jakarta J...**

Muhammad Alif Raihan, Jayanta, Mayanda Mega Santoni. "Face Recognition Using Convolutional Neural N...

**Faculty of Computer Science Universitas Pembangunan Nasional Veteran Jakarta J...**

ur.aeu.edu.my

**Faculty of Computer Science Universitas Pembangunan Nasional Veteran Jakarta J...**

Muhammad Alif Raihan, Jayanta, Mayanda Mega Santoni. "Face Recognition Using Convolutional Neural N...

**Institut Teknologi Telkom Purwokerto**

Nursatio Nugroho, Faisal Dharma Adhinata. "Penggunaan Metode K-Means dan K-Means++ Sebagai Cluster...

$$a_1, a_2) = |a_1 \cap a_2| / (|a_1|^{1/2} \cdot |a_2|$$

www.pokoj.com.pl

$$a_1, a_2) = 2|a_1 \cap a_2| / (|a_1| + |a_2|)(4$$

epdf.pub

**Corr(X,Y**

machinelearningmastery.com

---

**Covariance(X**

www.coursehero.com

---

**1]H. Rababah and A. T. Al-Taani, "An automated scoring approach forArabic short ...**

123dok.com

---

**International Journal of Engineering&Technology, vol. 7, no. 4.44, p**

e-journals.unmul.ac.id

---

**F. Rahutomo et al., "Open Problems in Indonesian Automatic EssayScoring System**

publikasi.dinus.ac.id

---

**3]R. B. Aji, Z. A. Baisal, and Y. Firdaus, "Automatic Essay GradingSystem Menggun...**

123dok.com

---

**A**

Anak Agung Putri Ratna, Dyah Lalita Luhurkinanti, Ihsan Ibrahim, Diyanatul Husna, Prima Dewi Purnamasari...

---

**SIMPLE-O, the Essay Grading System forIndonesian Language Using LSA Method ...**

sinta.ristekbrin.go.id

---

**A. Amalia, D. Gunawan, Y. Fithri, and I. Aulia, "Automated BahasaIndonesia essay e...**

Swinburne University of Technology on 2022-04-01

---

**2010, doi:10.7454/mst.v11i1.435**

ijjis.org

---

**J. Zeniarja, A. Salam, and I. Achsanu, "Sistem Koreksi Jawaban EsaiOtomatis (E-V...**

123dok.com

---

**Indonesian essay grading module usingNaturalLanguageProcessing**

www.springerprofessional.de

---



**T. F. de C. Marshall and J. L. Fleiss, "Statistical Methods for Rates and Proportions...."**

123dok.com

---

**H. Goma and A**

University of Melbourne on 2020-06-07

---

**L. R. Dice, "Measures of the Amount of Ecologic Association Between Species," Ec...**

www.oalib.com

---

**C. A. Sembiring, and M. A. Budiman, "The Implementation of Cosine Similarity to C...**

www.ijntr.org

---

**Mar**

Doni Putra Purbawa, Malikhah, Ratih Nur Esti Anggraini, Riyanarto Sarno. "Automatic Text Summarization u...

---

**Nazief, B. A. A. & Adriani, "Confix- stripping: Approach to Stemming Algorithm for B...**

ejournal.unitomo.ac.id

---

**N. A**

Universiti Teknologi MARA on 2015-10-05

---

**Analisis Aspek-Aspek Ujian Esai Daring Berbahasa Indonesia**

proceeding.sentrinov.org

---

**<http://proceeding.sentrinov.org/index.php/sentrinov/article/view/159>**

proceeding.sentrinov.org

---

**U. Hasanah, A. E. Permanasari, S. S. Kusumawardani, and F. S. Pribadi, "A scoring r...**

Mohammad Idhom, I Gusti Putu Asto Buditjahjanto, Munoto, Muchlas Samani. "Performance Evaluation of ...

---

**T. wahyuningsih, H. Henderi, and W. Winarno, "Text Mining and Automatic Short Ans...**

University of Dammam on 2021-10-23

---

**Computing Electronics and**

jurnal.murnisadar.ac.id

---

**F. Rahutomo, Y. P. Putra, and M. H. Ali, "Implementasi ManhattanDistance dan Dic...**

www.researchgate.net

---

**doi: 10.47738/JADS.V2I2.31**

ijjis.org

---

**M. Jamaluddin, N. Yuniarti, A. Rahmani, and J. Hutahaean, "AplikasiPenilaian Oto...**

123dok.com

---

**Q. Liu, H. Huang, J**

Namrata Rastogi, Parul Verma, Pankaj Kumar. "Query Expansion based on Word Embeddings and Ontologie...

---

**Rounaqi, "Query answering system of Shahih HadithMuttafaqun Alaih using Indon...**

ejournal.uin-malang.ac.id

---

**Rahman**

eudl.eu

---