

LAMPIRAN

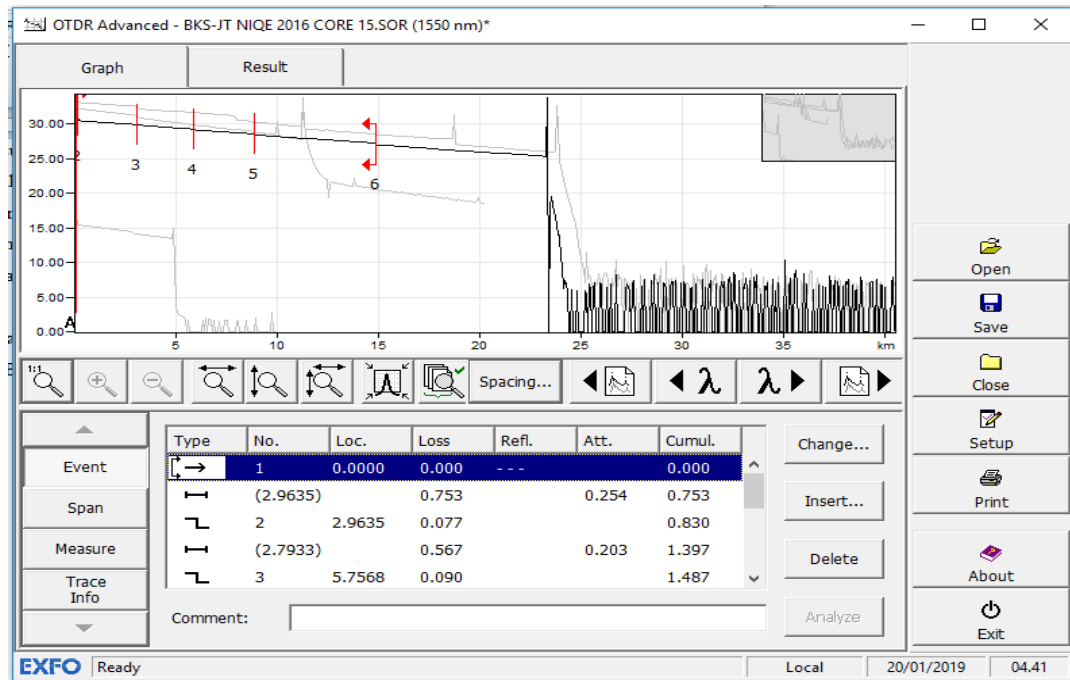
Tabel 4.4 Perhitungan Total Redaman *Link* Bekasi – Jatinegara Menggunakan Metode *Power Link Budget*

No Core	Rugi – rugi konektor (dB)	Rugi – Rugi <i>Splice</i>	Rugi – rugi kabel Serat Optik	Total Redaman (dB)
10	$2 \times 0.5 = 1 \text{ dB}$	$8 \times 0.2 = 1.6 \text{ dB}$	$23,296 \times 0.215 = 5,008$	7.608
11	$2 \times 0.5 = 1 \text{ dB}$	$8 \times 0.2 = 1.6 \text{ dB}$	$23,722 \times 0.215 = 5,100$	7.700
12	$2 \times 0.5 = 1 \text{ dB}$	$8 \times 0.2 = 1.6 \text{ dB}$	$23,292 \times 0.215 = 5,007$	7.607
13	$2 \times 0.5 = 1 \text{ dB}$	$8 \times 0.2 = 1.6 \text{ dB}$	$23,300 \times 0.215 = 5,009$	7.609
14	$2 \times 0.5 = 1 \text{ dB}$	$8 \times 0.2 = 1.6 \text{ dB}$	$23,304 \times 0.215 = 5,010$	7.610
15	$2 \times 0.5 = 1 \text{ dB}$	$8 \times 0.2 = 1.6 \text{ dB}$	$23,310 \times 0.215 = 5,011$	7.611
16	$2 \times 0.5 = 1 \text{ dB}$	$8 \times 0.2 = 1.6 \text{ dB}$	$23,306 \times 0.215 = 5,010$	7.610
77	$2 \times 0.5 = 1 \text{ dB}$	$4 \times 0.2 = 0.8 \text{ dB}$	$9.093 \times 0.215 = 1.954$	3.754
78	$2 \times 0.5 = 1 \text{ dB}$	$4 \times 0.2 = 0.8 \text{ dB}$	$9.093 \times 0.215 = 1.954$	3.754
82	$2 \times 0.5 = 1 \text{ dB}$	$4 \times 0.2 = 0.8 \text{ dB}$	$9.093 \times 0.215 = 1.954$	3.754
83	$2 \times 0.5 = 1 \text{ dB}$	$4 \times 0.2 = 0.8 \text{ dB}$	$9.066 \times 0.215 = 1.949$	3.749

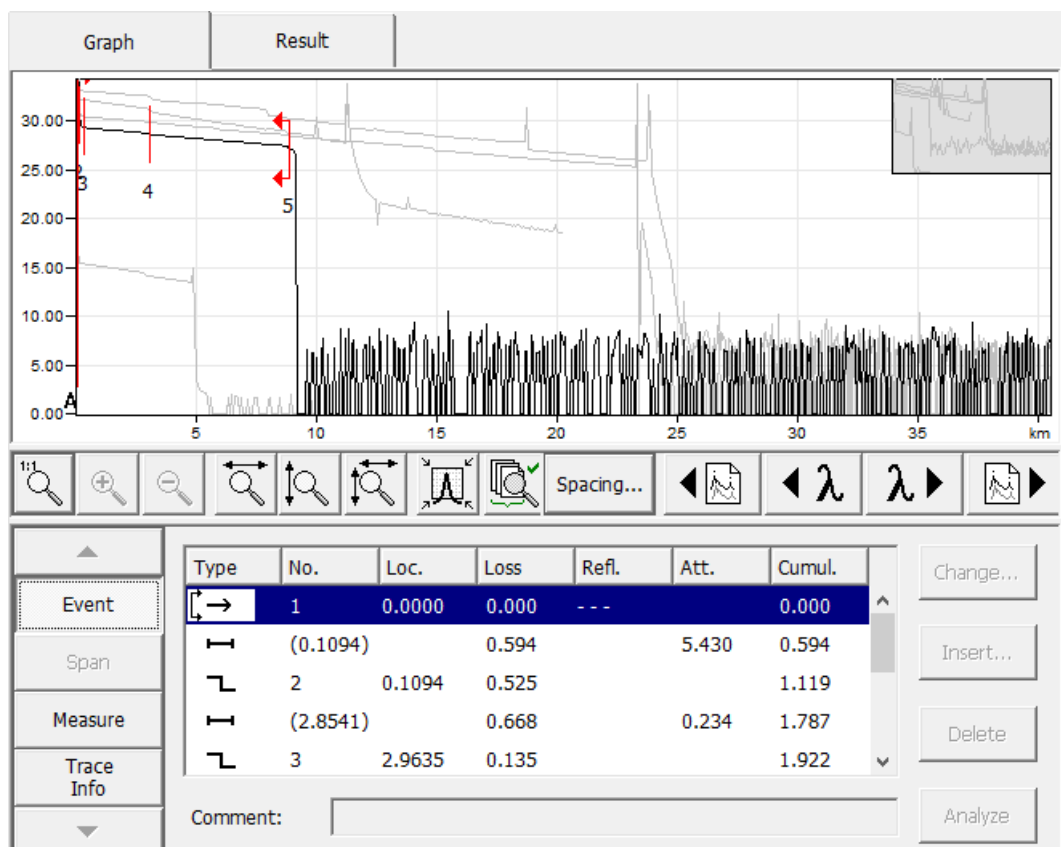
Tabel 4.5 Perhitungan Total Redaman *Link* Bekasi – Pondok Kelapa Menggunakan Metode *Power Link Budget*

No Core	Rugi-rugi konektor (dB)	Rugi – Rugi <i>Splice</i>	Rugi – rugi kabel Serat Optik	Total Redaman (dB)
1	$2 \times 0.5 = 1 \text{ dB}$	$8 \times 0.2 = 0.8 \text{ dB}$	$23,720 \times 0,215 = 5,099$	6.899
2	$2 \times 0.5 = 1 \text{ dB}$	$8 \times 0.2 = 0.8 \text{ dB}$	$23,722 \times 0,215 = 5,100$	6.900
3	$2 \times 0.5 = 1 \text{ dB}$	$4 \times 0.2 = 0.8 \text{ dB}$	$11,193 \times 0,215 = 2,406$	4.206
4	$2 \times 0.5 = 1 \text{ dB}$	$4 \times 0.2 = 0.8 \text{ dB}$	$11,194 \times 0,215 = 2,406$	4.206
5	$2 \times 0.5 = 1 \text{ dB}$	$5 \times 0.2 = 0.8 \text{ dB}$	$12,462 \times 0,215 = 2,679$	4.479
6	$2 \times 0.5 = 1 \text{ dB}$	$4 \times 0.2 = 0.8 \text{ dB}$	$11,191 \times 0,215 = 2,406$	4.206
7	$2 \times 0.5 = 1 \text{ dB}$	$4 \times 0.2 = 0.8 \text{ dB}$	$11,193 \times 0,215 = 2,406$	4.206
8	$2 \times 0.5 = 1 \text{ dB}$	$4 \times 0.2 = 0.8 \text{ dB}$	$11,193 \times 0,215 = 2,406$	4.206
9	$2 \times 0.5 = 1 \text{ dB}$	$4 \times 0.2 = 0.8 \text{ dB}$	$11,193 \times 0,215 = 2,406$	4.206
10	$2 \times 0.5 = 1 \text{ dB}$	$4 \times 0.2 = 0.8 \text{ dB}$	$11,193 \times 0,215 = 2,406$	4.206
11	$2 \times 0.5 = 1 \text{ dB}$	$4 \times 0.2 = 0.8 \text{ dB}$	$11,189 \times 0,215 = 2,405$	4.205
12	$2 \times 0.5 = 1 \text{ dB}$	$3 \times 0.2 = 0.8 \text{ dB}$	$7,932 \times 0,215 = 1,705$	3.505
15	$2 \times 0.5 = 1 \text{ dB}$	$3 \times 0.2 = 0.8 \text{ dB}$	$7,539 \times 0,215 = 1,620$	3.420
16	$2 \times 0.5 = 1 \text{ dB}$	$8 \times 0.2 = 0.8 \text{ dB}$	$23,797 \times 0,215 = 5,116$	6.916

- **Link Bekasi – Jatinegara Core 15**

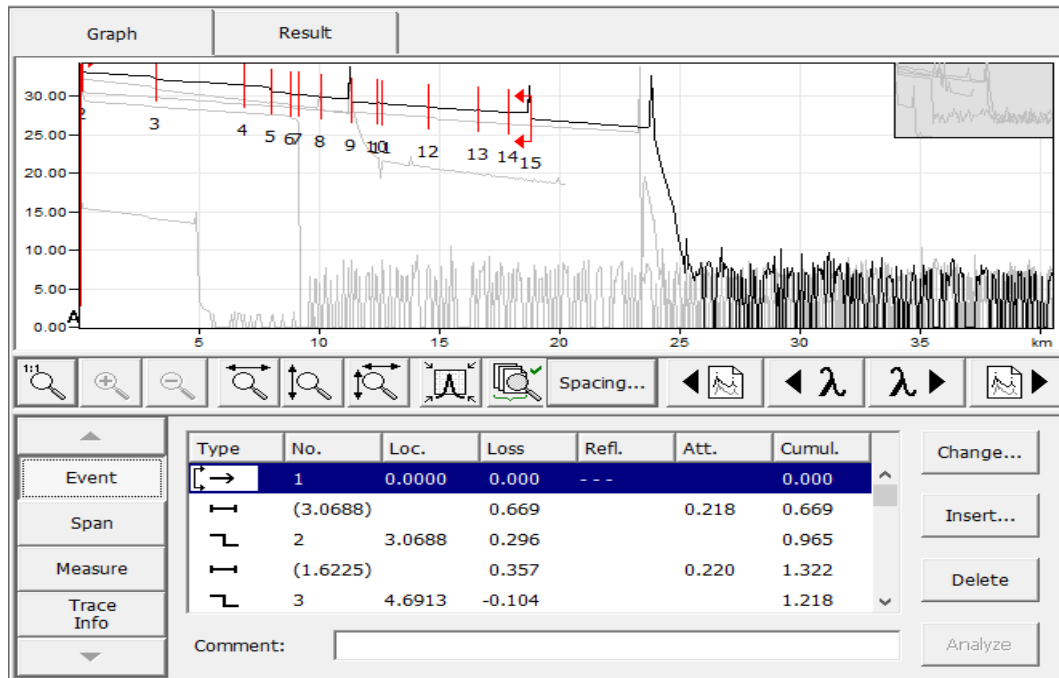


- **Link Bekasi – Jatinegara Core 78**



- **Link Bekasi – Pondok Kelapa Core 16**

OTDR Advanced - BKS-PDK EJA CORE 16.SOR (1550 nm)



- **Link Bekasi – Pondok Kelapa Core 5**

